

REV	DATE	BY	APP	COMMENT
	7/23/2024	JS		

DESIGNED BY: JS  
 DRAWN BY: JS  
 CHECKED BY: JS

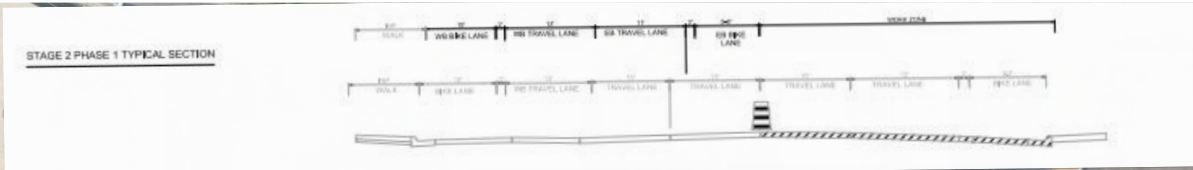


Disclaimer- This is a proposed traffic device layout.  
 It has not been approved by a Professional Engineer and must be approved and accepted  
 by the Road Authority. Safety Signs LLC does not assume any legal liability.

**TRAFFIC PLAN**  
 Southside work- Lyndale to 12th



Thomas and Sons- Hennepin- Dunwoody Bikeway- Minneapolis  
 SHEET NO. 1b of X SHEETS



REV	DATE	BY	APP	COMMENT
	7/23/2024	JS		

DESIGNED BY:	JS
DRAWN BY:	JS
CHECKED BY:	JS

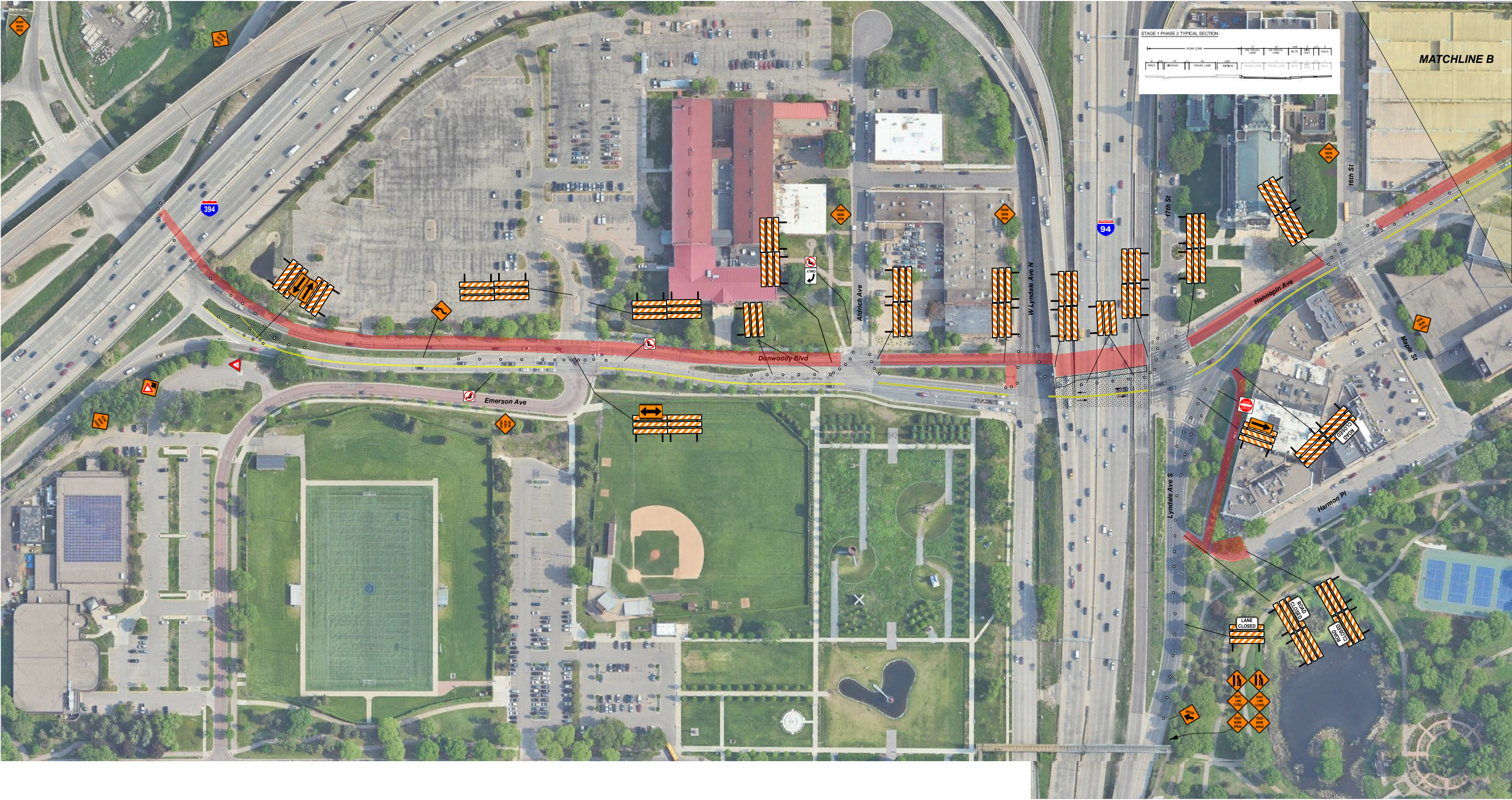


Disclaimer- This is a proposed traffic device layout. It has not been approved by a Professional Engineer and must be approved and accepted by the Road Authority. Safety Signs LLC does not assume any legal liability.

**TRAFFIC PLAN**  
Southside work- Lyndale to 12th



Thomas and Sons- Hennepin- Dunwoody Bikeway- Minneapolis  
SHEET NO. 2 of X SHEETS



REV	DATE	BY	APP	COMMENT
	7/23/2024	JS		

DESIGNED BY: JS  
 DRAWN BY: JS  
 CHECKED BY: JS

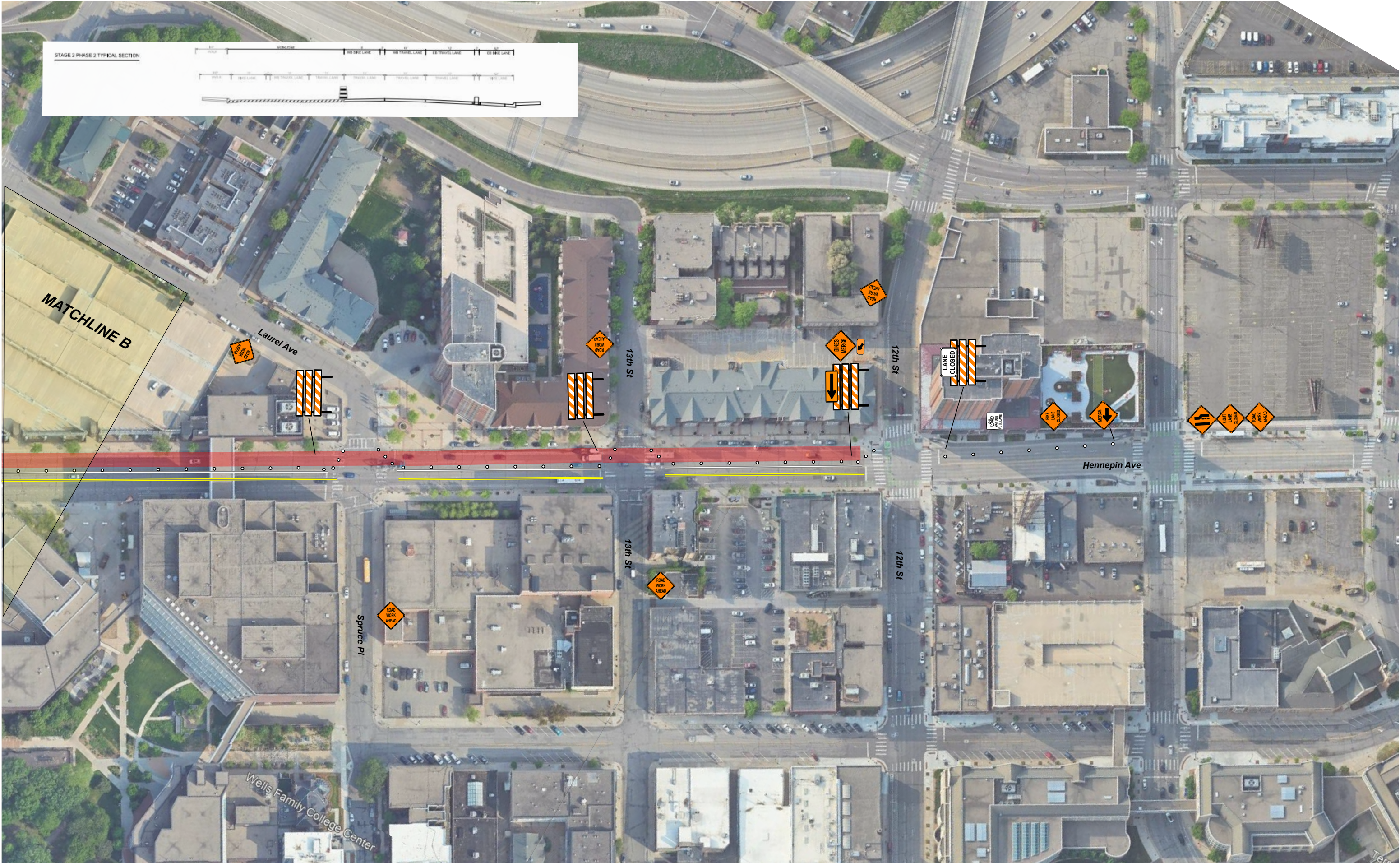
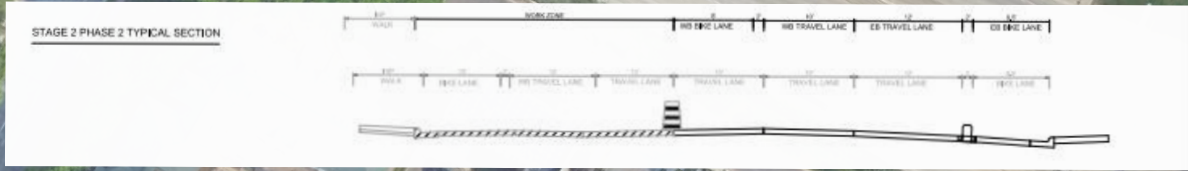


Disclaimer- This is a proposed traffic device layout. It has not been approved by a Professional Engineer and must be approved and accepted by the Road Authority. Safety Signs LLC does not assume any legal liability.

**TRAFFIC PLAN**  
 Northside work- 394 to 12th



Thomas and Sons- Hennepin- Dunwoody Bikeway- Minneapolis  
 SHEET NO. 3 of X SHEETS



REV	DATE	BY	APP	COMMENT
	7/23/2024	JS		

DESIGNED BY: JS  
 DRAWN BY: JS  
 CHECKED BY: JS



Disclaimer- This is a proposed traffic device layout. It has not been approved by a Professional Engineer and must be approved and accepted by the Road Authority. Safety Signs LLC does not assume any legal liability.

**TRAFFIC PLAN**  
 Northside work- Lyndale to 12th



Thomas and Sons- Hennepin- Dunwoody Bikeway- Minneapolis  
 SHEET NO. 4 of X SHEETS