

| REV | DATE      | BY | APP | COMMENT |
|-----|-----------|----|-----|---------|
|     | 7/23/2024 | JS |     |         |
|     |           |    |     |         |
|     |           |    |     |         |

DESIGNED BY: JS  
 DRAWN BY: JS  
 CHECKED BY: JS

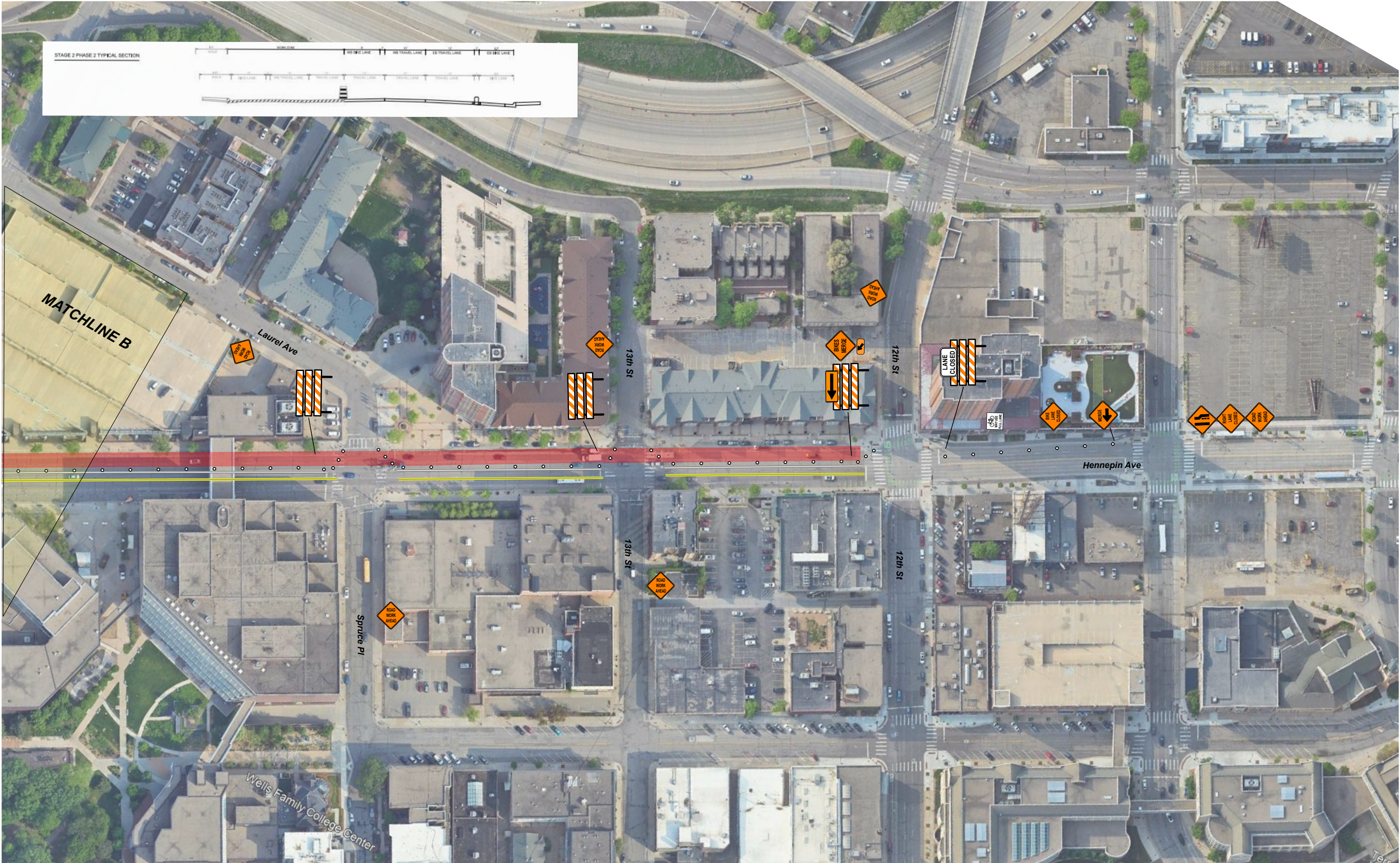
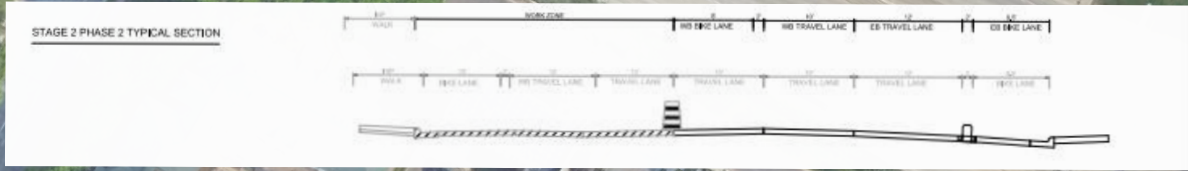


Disclaimer- This is a proposed traffic device layout. It has not been approved by a Professional Engineer and must be approved and accepted by the Road Authority. Safety Signs LLC does not assume any legal liability.

**TRAFFIC PLAN**  
 Northside work- 394 to 12th



Thomas and Sons- Hennepin- Dunwoody Bikeway- Minneapolis  
 SHEET NO. 1 of 3 SHEETS



| REV | DATE      | BY | APP | COMMENT |
|-----|-----------|----|-----|---------|
|     | 7/23/2024 | JS |     |         |

DESIGNED BY: JS  
 DRAWN BY: JS  
 CHECKED BY: JS



Disclaimer- This is a proposed traffic device layout. It has not been approved by a Professional Engineer and must be approved and accepted by the Road Authority. Safety Signs LLC does not assume any legal liability.

**TRAFFIC PLAN**  
 Northside work- Lyndale to 12th



Thomas and Sons- Hennepin- Dunwoody Bikeway- Minneapolis  
 SHEET NO. 2 of 3 SHEETS



Linden Ave



Dunwoody Blvd

W Lyndale Ave N

| REV | DATE      | BY | APP | COMMENT |
|-----|-----------|----|-----|---------|
|     | 7/23/2024 | JS |     |         |
|     |           |    |     |         |
|     |           |    |     |         |

DESIGNED BY: JS  
 DRAWN BY: JS  
 CHECKED BY: JS



Disclaimer- This is a proposed traffic device layout. It has not been approved by a Professional Engineer and must be approved and accepted by the Road Authority. Safety Signs LLC does not assume any legal liability.

TRAFFIC PLAN  
 Northside work- 394 to 12th

