

Is it done yet?



165°F

Chicken, turkey, duck, goose (whole, parts or ground)



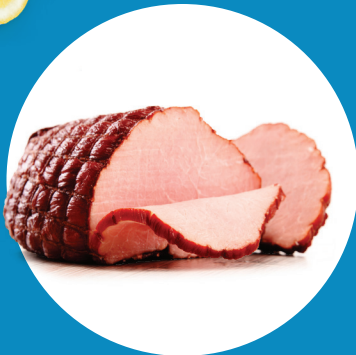
155°F

Hamburger, meatloaf and other ground meats, injected meats, ground fish



145°F

Beef, corned beef, pork, ham, lamb, veal (steaks or chops), **fish, shellfish**



135°F

Ready-to-eat, commercially processed ham, other roasts for hot holding

For alternative times and temperatures, see the FDA Food Code 2013 www.fda.gov/Food/GuidanceRegulation/RetailFoodProtection/FoodCode/ucm374275.htm

Last Updated: 10/1/2024

www.minneapolismn.gov/food-safety

For reasonable accommodations or alternative formats please contact Environmental Health at health@minneapolismn.gov or 612-673-2301. People who are deaf or hard of hearing can use a relay service to call 311 at 612-673-3000. TTY users call 612-263-6850. Para ayuda, llame al 311. Rau kev pab 311. Hadio aad Caawimaad u baahantahay wac 311.