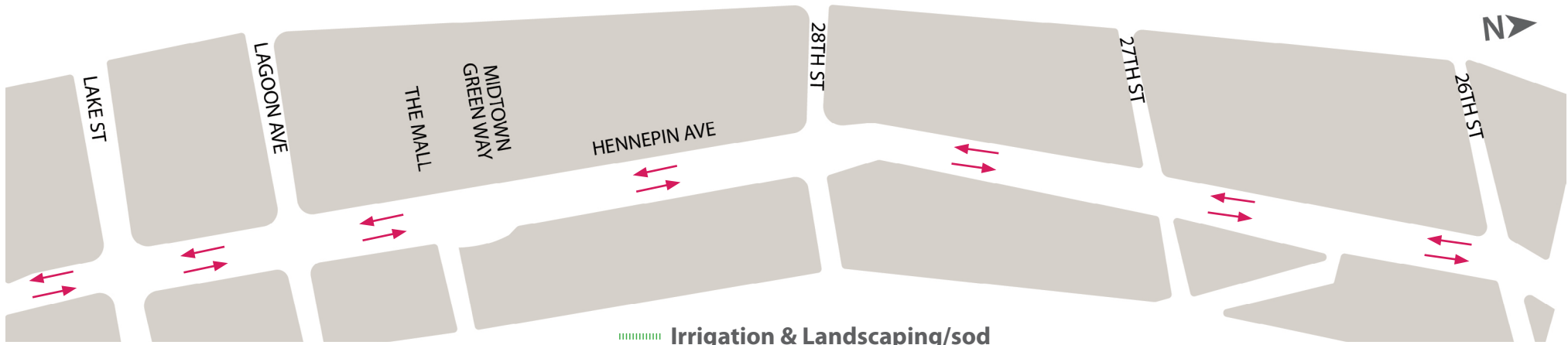


# Hennepin Ave S Reconstruction Project

(W Lake St. to 26th St)

## Construction & Traffic Impact Update

April 6 - 12, 2025



**Construction work:** Partial Intersection Restriction Sanitary Sewer Conduit Work Storm Sewer

**Traffic impact:** Lane Closures/Work Zone Travel Lanes Roadway Closure Roadway & Sidewalk work

Page 1

### WHAT'S HAPPENING

#### Lake St to 26th St

- Hennepin Ave is open to traffic.
- Buses have returned to Hennepin
- There will be misc. work in the area during the spring months

### WHAT TO EXPECT

#### Lake St to 26th St

- Roadway and utility punchlist work and final landscaping will occur in the spring months. This will require periodic short term closures of the bus/parking lane during the day.
- Cross streets will at times be reduced to 1-lane.
- Parking lanes will be closed at certain locations on side streets.
- Business access will remain open during the construction.
- Pedestrian detours will be set up as needed. Greater impacts can be expected at intersections where work is occurring.

### STAY CONNECTED

#### Visit the project website

Sign up for project updates on the project website.

[Minneapolis.gov/government/projects/hennepin-ave-s/](https://www.minneapolis.gov/government/projects/hennepin-ave-s/)



### CONTACT US

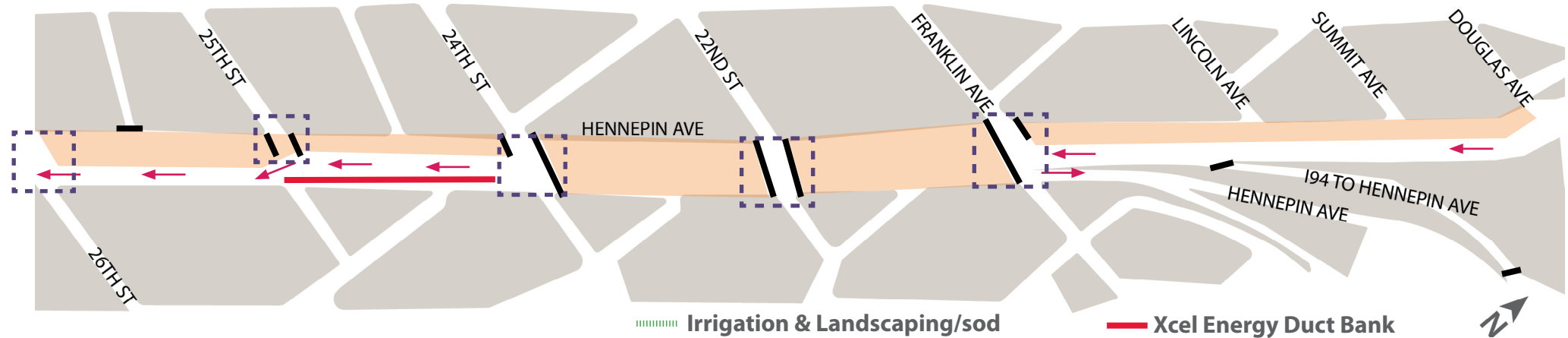
Adam Hayow, Project Engineer - Public Works  
 ☎ 612-673-2172 ✉ adam.hayow@minneapolis.gov

# Hennepin Ave S Reconstruction Project

(W 26th St. to Douglas Ave)

## Construction & Traffic Impact Update

April 6 - 12, 2025



Page 2

### Construction work:



Partial Intersection Restriction

Sanitary Sewer

Conduit Work

Storm Sewer

### Traffic impact:



Lane Closures/Work Zone



Travel Lanes



Roadway Closure



Roadway & Sidewalk work



## WHAT'S HAPPENING

### 26th St to Douglas Ave

- Roadway construction has begun. This work includes removals, sawcutting, grading, storm sewer work and water service replacement- Hennepin is closed from 24th to 26th and cross streets are reduced to one lane.
- Temp lighting is being installed as existing lighting and signals are being removed.
- Xcel Energy work will continue until early April between 26th and 24th St.



## WHAT TO EXPECT

### 26th St to Douglas Ave

- Roadway & Utility work using heavy equipment will increase noise, vibration, and dust in work areas and sidewalks.
- Cross streets will at times be reduced to 1-lane or closed to traffic.
- Parking lanes will be closed at certain locations on side locations.
- Business access will remain open during the construction.
- Pedestrian detours will be set up as needed. Greater impacts can be expected at intersections where work is occurring.
- Traffic Delays in the area, closures, and detours.



## STAY CONNECTED

### Visit the project website

Sign up for project updates on the project website.

[Minneapolis.gov/government/projects/hennepin-ave-s/](https://www.minneapolis.gov/government/projects/hennepin-ave-s/)



## CONTACT US

Adam Hayow, Project Engineer - Public Works

612-673-2172 | adam.hayow@minneapolis.gov

# Hennepin Ave S Reconstruction Project

(W Lake St. to Douglas Ave.)

## Block-by-Block Work Summary

April 6 - 12, 2025

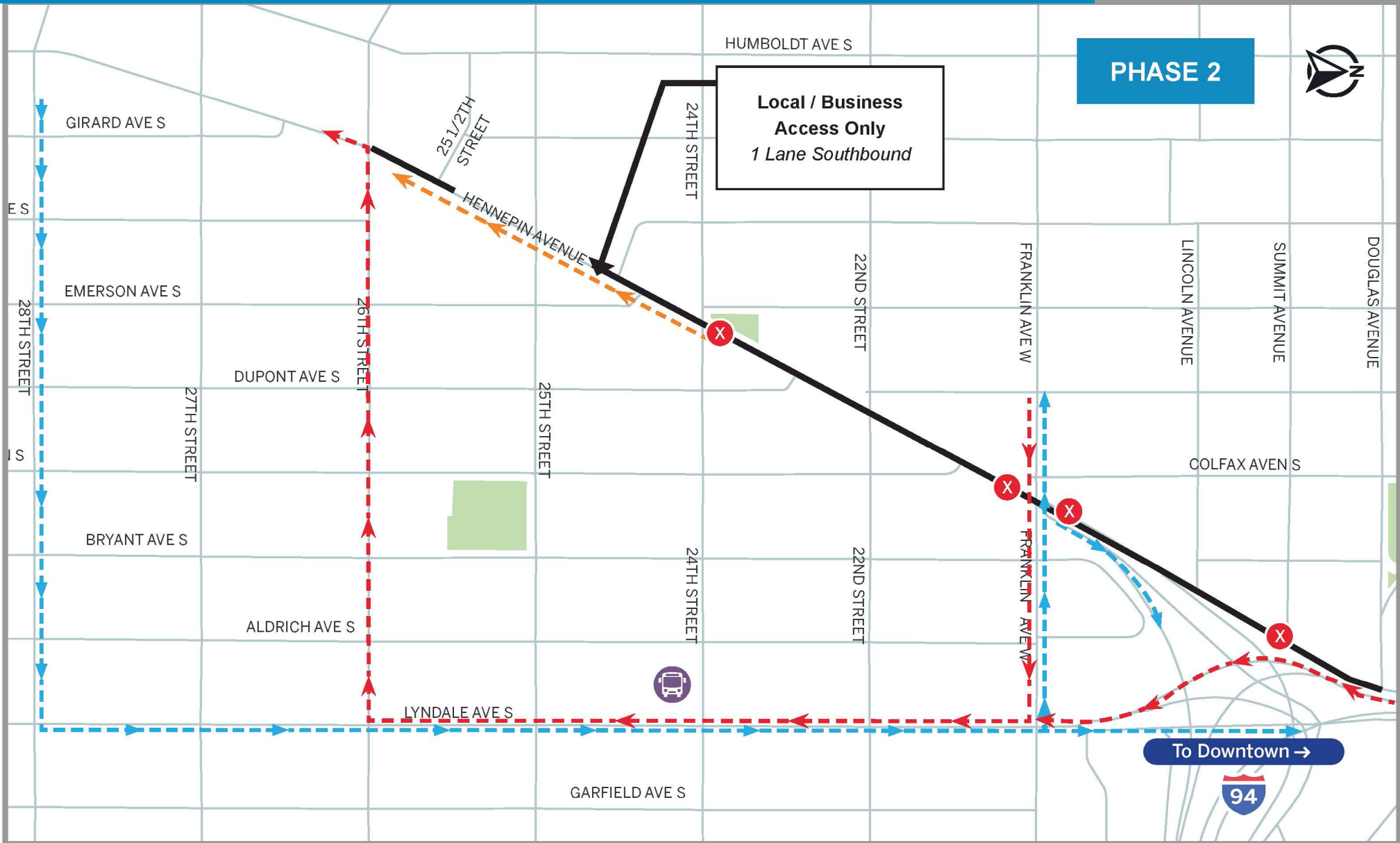


STREET BLOCK	PROJECT RELATED WORK	ANTICIPATED ROAD/PEDESTRIAN RESTRICTIONS				NOTES
		TEMPORARY PED RAMPS	PARKING RESTRICTIONS	TWO LANES OPEN (5-9 AM + 3-7 PM)	ONE LANE OPEN	
Lake St. Intersection						
Lake St. - Lagoon Ave	Planter Railings					
Lagoon Ave Intersection						
Lagoon Ave -29th St.	Planter Railings					
29th St. Intersection						
29th St. - 28th St.	Planter Railings					
28th St. Intersection						
28th St. - 27th St.	Planter Railings					
27th St. Intersection						
27th St - 26th St.	Planter Railings					
26th St. Intersection	Planter Railings					
26th St. -25th St.	Removals & Temp lighting	X	X		X	Single Business access lane south bound
25th St. Intersection	Removals & Temp lighting	X	X			
25th St - 24th St.	Xcel Energy Utility work	X	X		X	Single Business access lane south bound
24th St. Intersection	Removals & Temp lighting	X	X			
24th St. - 22nd St.	Removals & Temp lighting				X	Closed
22nd St. Intersection	Removals & Temp lighting				X	
22nd St. - Franklin Ave.	Removals & Temp lighting					Closed
Franklin Ave. Intersection	Removals & Temp lighting					
Franklin Ave -Lincoln Ave.	Removals & Temp lighting				X	Single Business access lane south bound
Lincoln Ave. Intersection						
Lincoln Ave. - Summit Ave.	Removals & Temp lighting				X	Single Business access lane south bound
Summit Ave. Intersection						
Summit Ave. - Douglas Ave.	Removals & Temp lighting				X	Single Business access lane south bound

# Hennepin Ave S Reconstruction Project

(W Lake St. to Douglas Ave.)

Detour Routes  
April 6 - 12, 2025



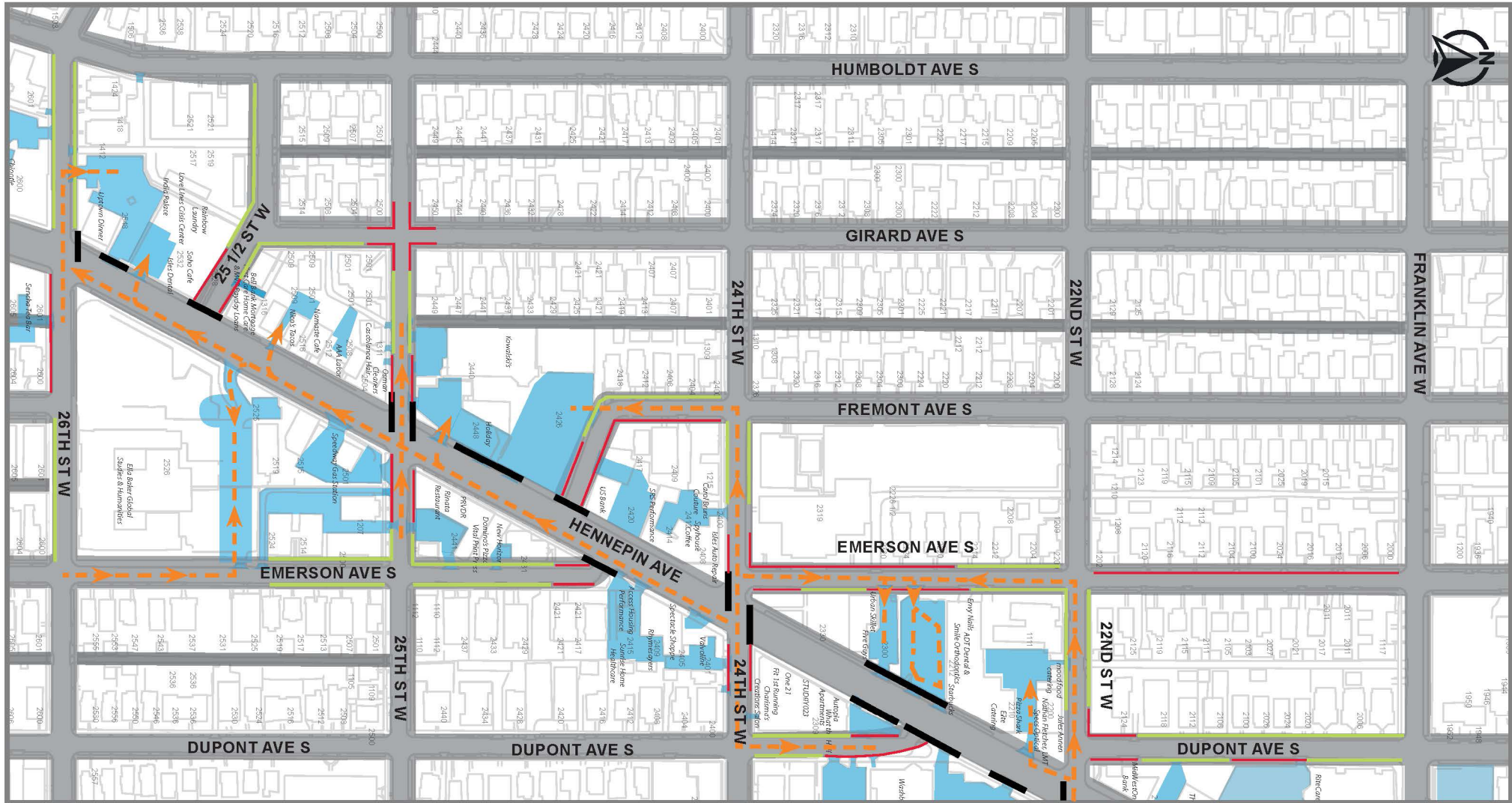
- Detour Route N
- ← Detour Route S
- Phase 2 Construction zone
- Business Access Route
- X Road Closed
- Bus Bus Detour

# Hennepin Ave S Reconstruction Project

(W Lake St. to Douglas Ave.)

Business Parking / Access

April 6 - 12, 2025



Private/Business parking

No Parking

Onstreet Parking

Road or Access Closed

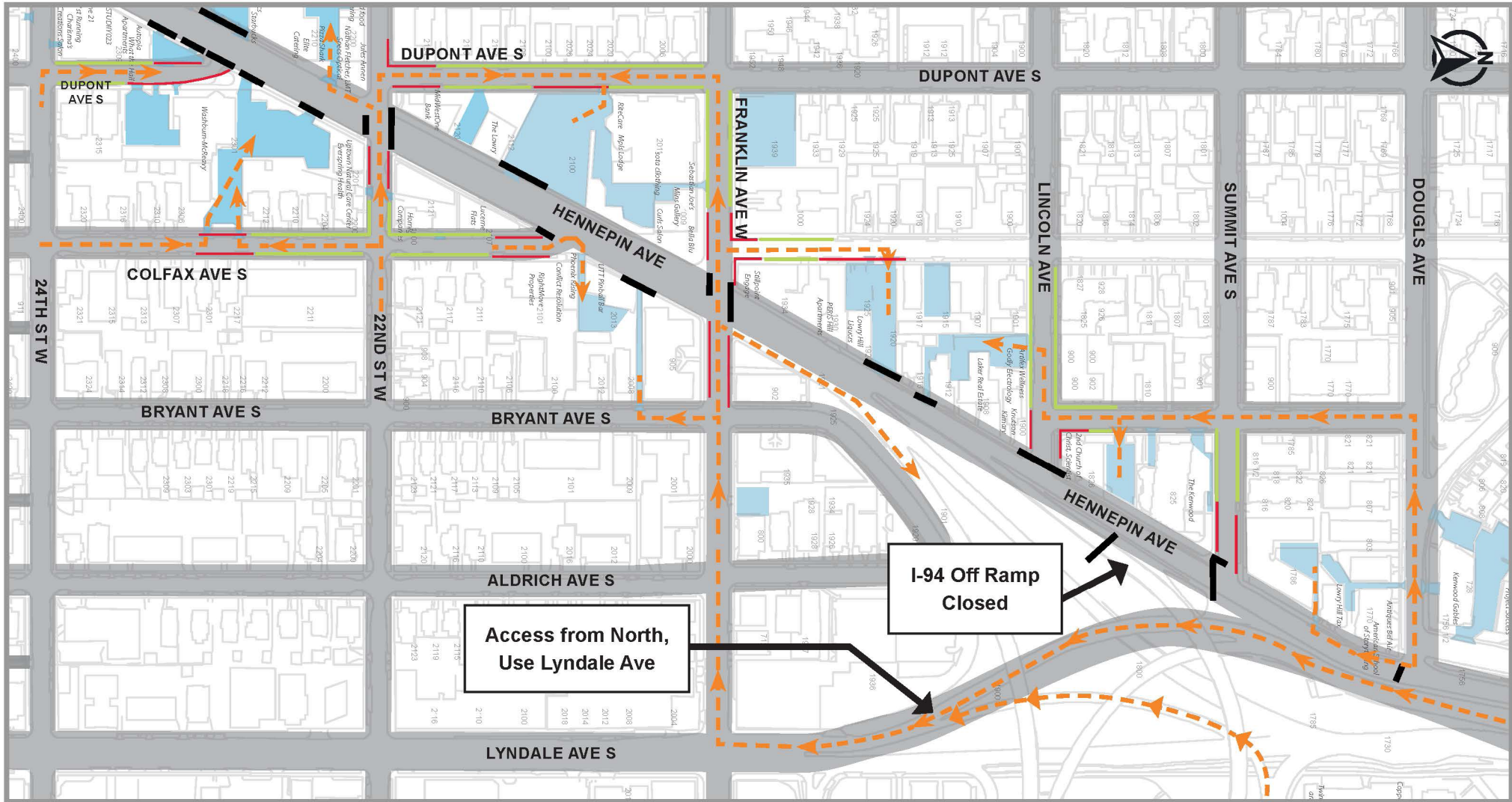
Business Access Route

# Hennepin Ave S Reconstruction Project

(W Lake St. to Douglas Ave.)

Business Parking / Access

April 6 - 12, 2025



■ Private/Business parking

■ No Parking

■ Onstreet Parking

■ Road or Access Closed

- - - - - Business Access Route