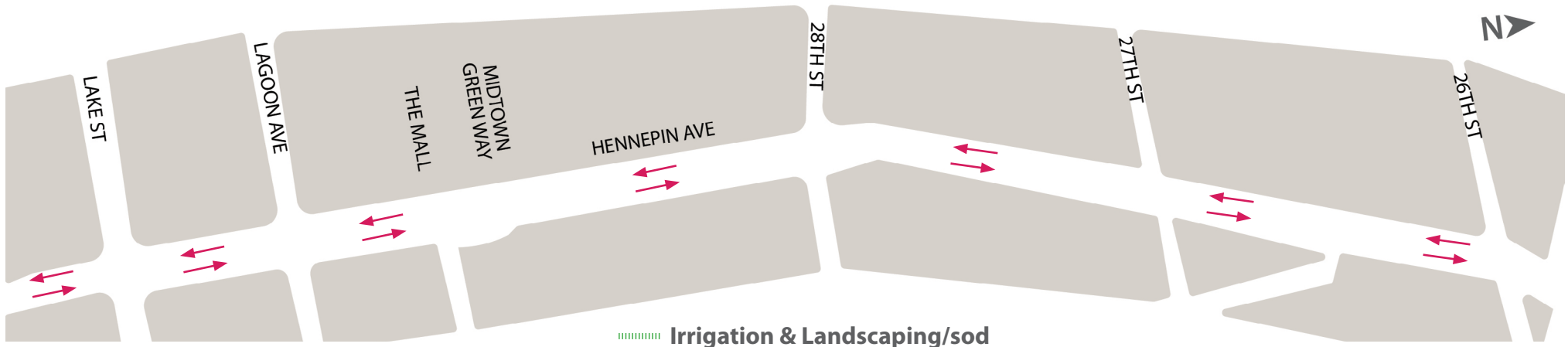


Hennepin Ave S Reconstruction Project

(W Lake St. to 26th St)

Construction & Traffic Impact Update

March 14 - 30, 2025



Page 1

WHAT'S HAPPENING

Lake St to 26th St

- Hennepin Ave is open to traffic.
- Buses have returned to Hennepin
- There will be misc. work in the area during the spring months

WHAT TO EXPECT

Lake St to 26th St

- Roadway and utility punchlist work and final landscaping will occur in the spring months. This will require periodic short term closures of the bus/parking lane during the day.
- Cross streets will at times be reduced to 1-lane.
- Parking lanes will be closed at certain locations on side streets.
- Business access will remain open during the construction.
- Pedestrian detours will be set up as needed. Greater impacts can be expected at intersections where work is occurring.

STAY CONNECTED

Visit the project website

Sign up for project updates on the project website.

[Minneapolis.gov/government/projects/hennepin-ave-s/](https://www.minneapolis.gov/government/projects/hennepin-ave-s/)



CONTACT US

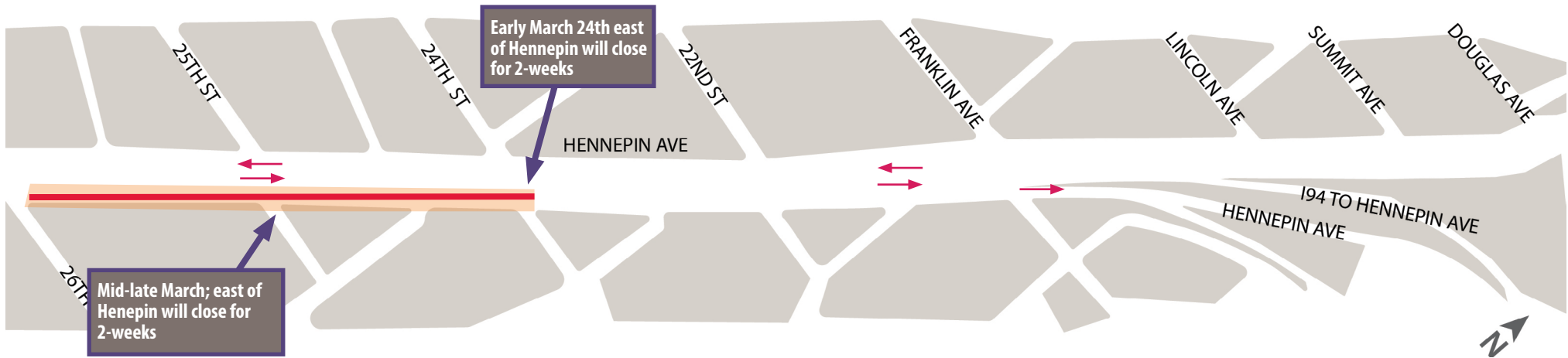
Adam Hayow, Project Engineer - Public Works
 ☎ 612-673-2172 ✉ adam.hayow@minneapolis.gov

Hennepin Ave S Reconstruction Project

(W 26th St. to Douglas Ave)

Construction & Traffic Impact Update

March 14 - 30, 2025



Page 2

Construction work: — Xcel Energy Duct Bank

Partial Intersection Restriction

Traffic impact: Lane Closures

Travel Lanes CenterPoint Gas



WHAT'S HAPPENING

26th St to Douglas Ave

- Roadway Construction will begin March 31st. Expect delays, closures, and detours.
- Xcel Energy work will continue until early May between 26th and 24th St. Xcel will be working in the east side parking and north bound lanes to install new concrete duct banks and manholes.



WHAT TO EXPECT

26th St to Douglas Ave

- Roadway & Utility work using heavy equipment will increase noise, vibration, and dust in work areas and sidewalks.
- Cross streets will at times be reduced to 1-lane or closed to traffic.
- Parking lanes will be closed at certain locations on side locations.
- Business access will remain open during the construction.
- Pedestrian detours will be set up as needed. Greater impacts can be expected at intersections where work is occurring.
- Traffic Delays in the area, closures, and detours.



STAY CONNECTED

Visit the project website

Sign up for project updates on the project website.

[Minneapolis.gov/government/projects/hennepin-ave-s/](https://www.minneapolis.gov/government/projects/hennepin-ave-s/)



CONTACT US

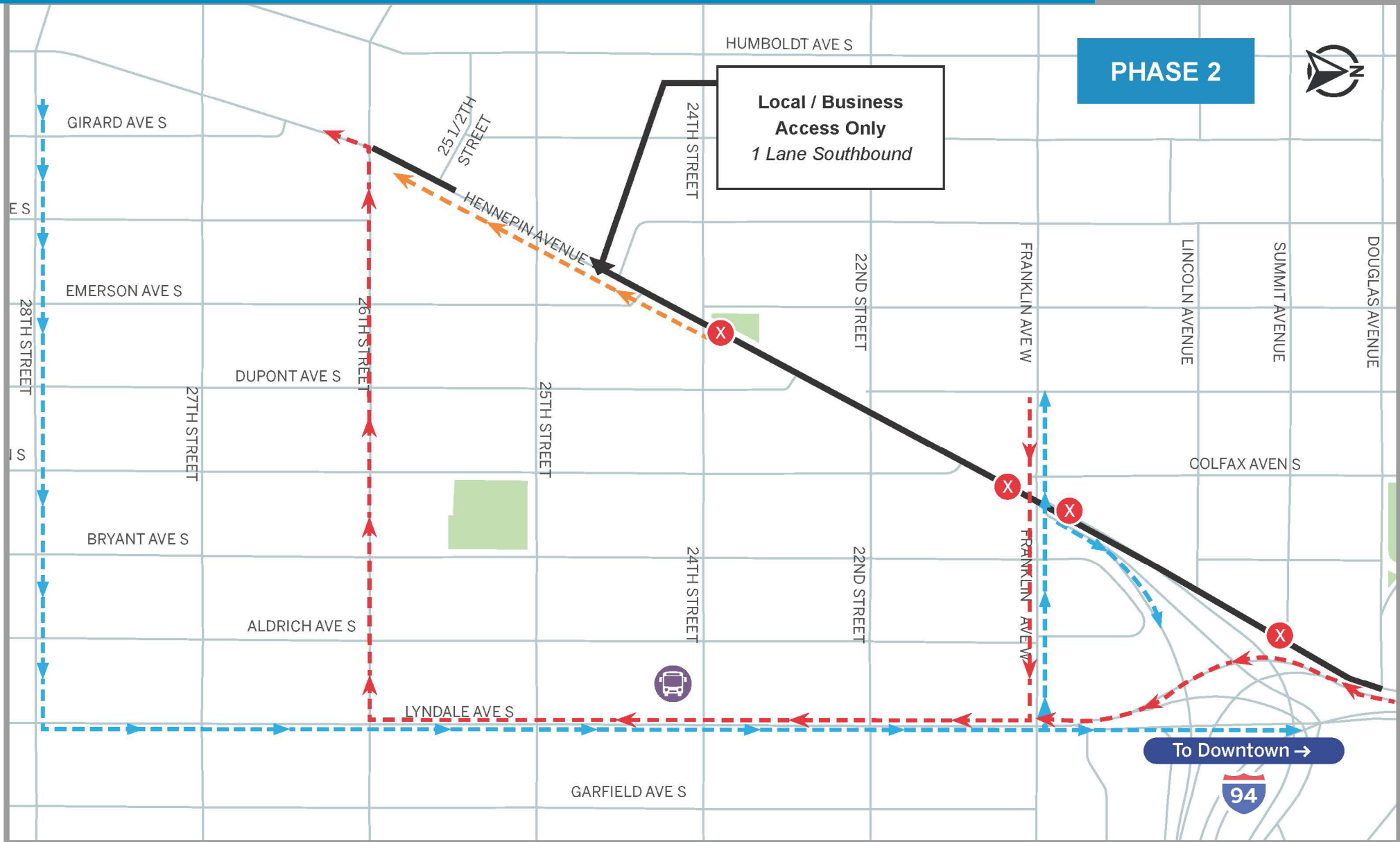
Adam Hayow, Project Engineer - Public Works

📞 612-673-2172 ✉️ adam.hayow@minneapolismn.gov

Hennepin Ave S Reconstruction Project

(W Lake St. to Douglas Ave.)

Detour Routes
Starting March 31, 2025



— Detour Route N

— Detour Route S

■ Phase 2 Construction zone

— Business Access Route

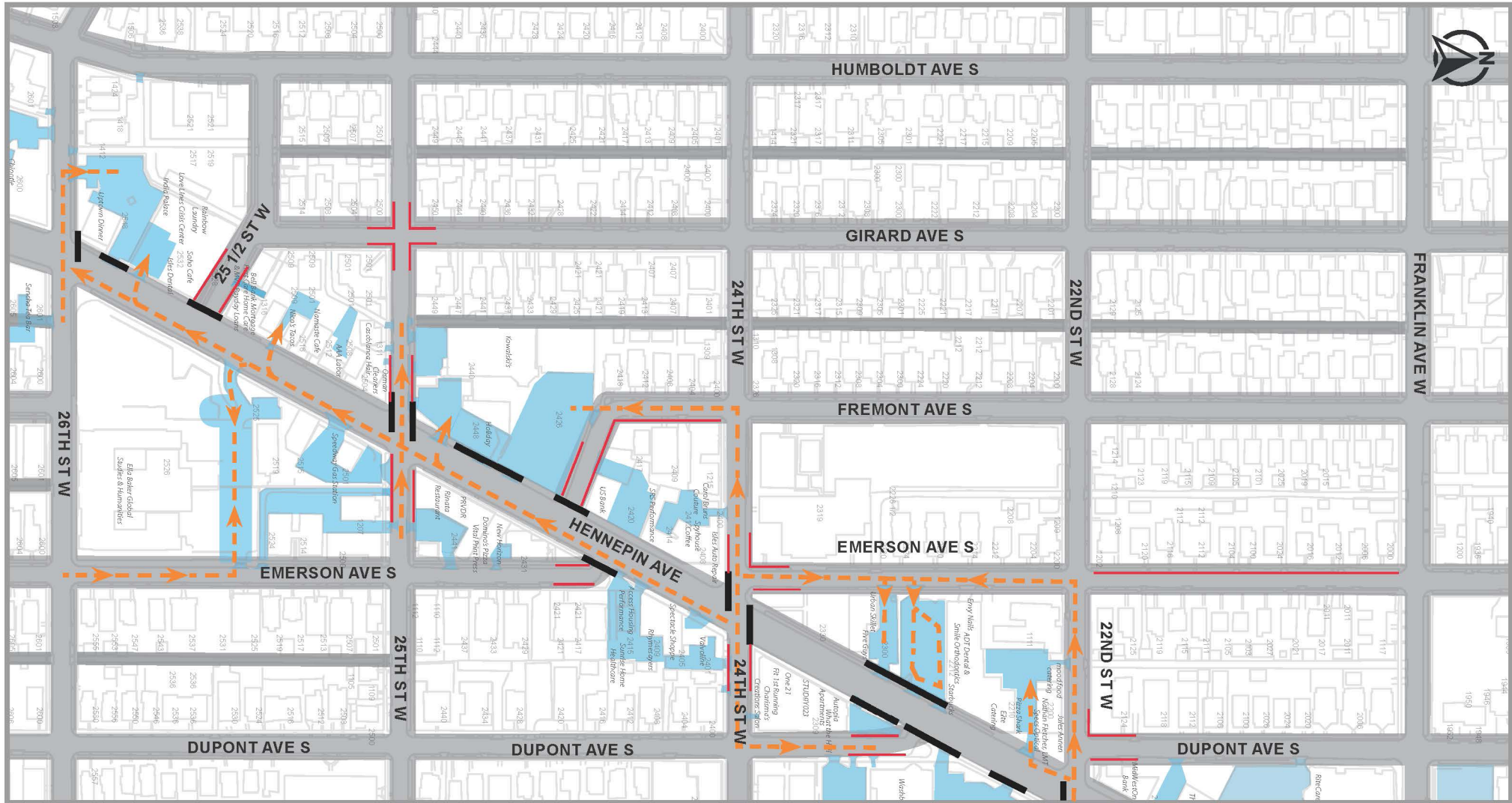
⊗ Road Closed

🚌 Bus Detour

Hennepin Ave S Reconstruction Project

(W Lake St. to Douglas Ave.)

Business Parking / Access
Starting March 31, 2025



Private/Business parking

No Parking

Onstreet Parking

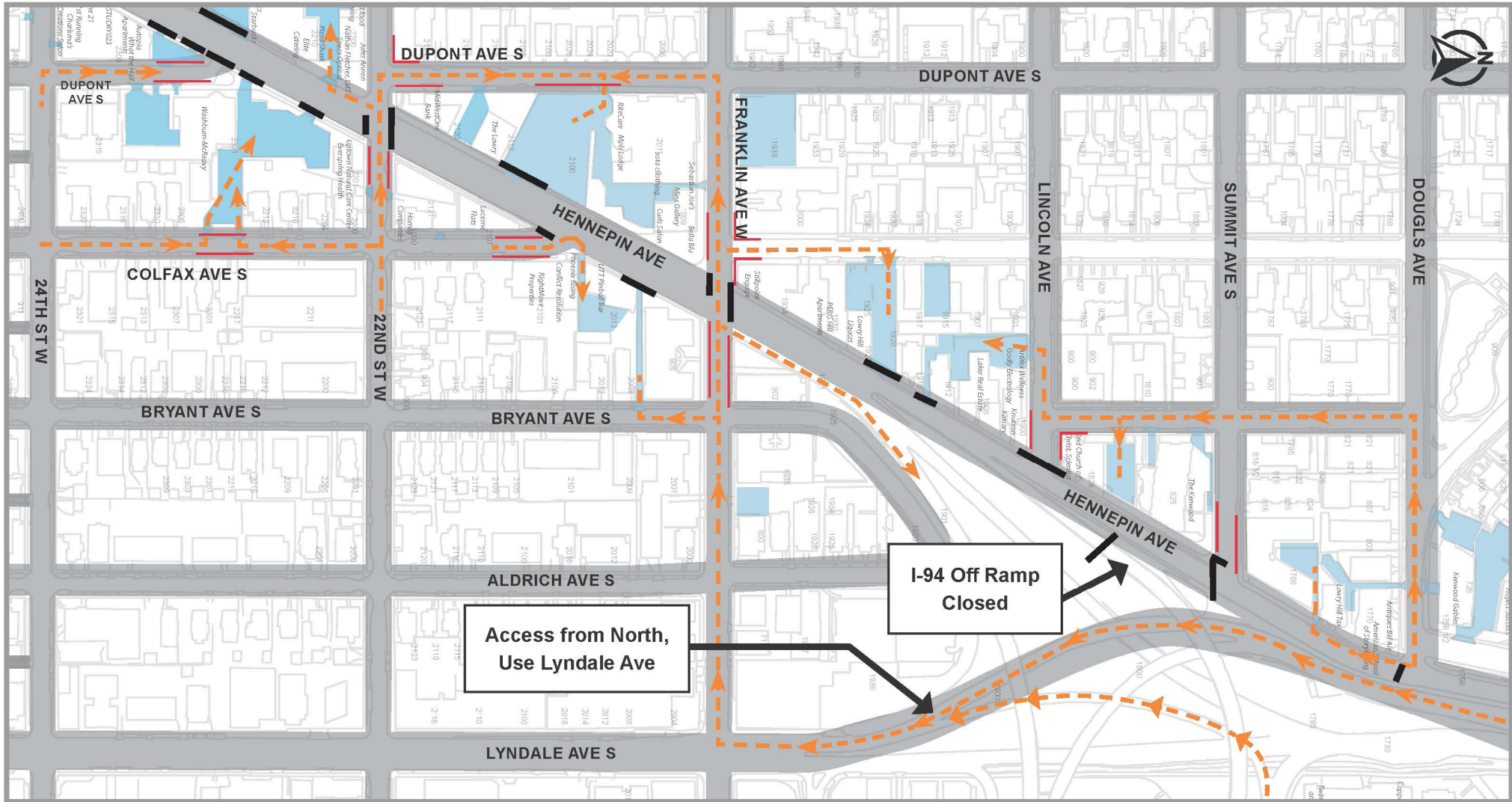
Road or Access Closed

Business Access Route

Hennepin Ave S Reconstruction Project

(W Lake St. to Douglas Ave.)

Business Parking / Access
Starting March 31, 2025



■ Private/Business parking

■ No Parking

■ Onstreet Parking

■ Road or Access Closed

- - - - - Business Access Route