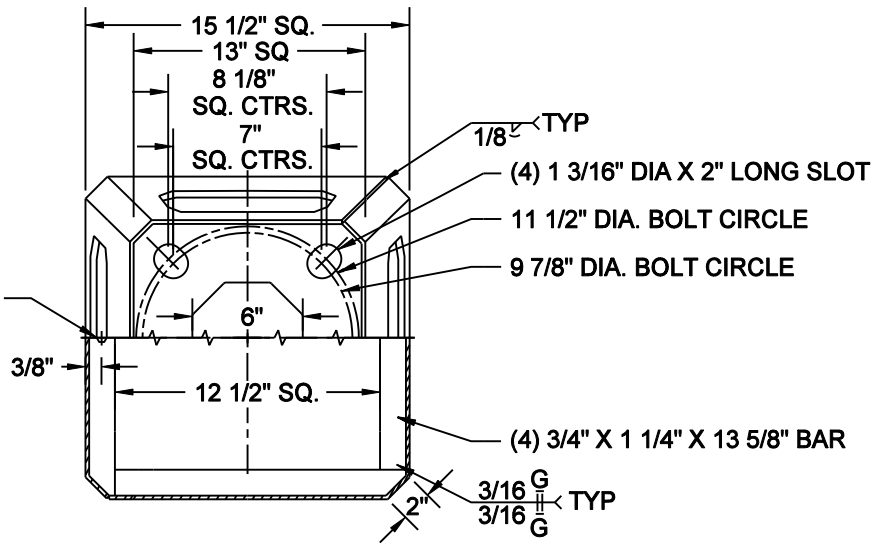
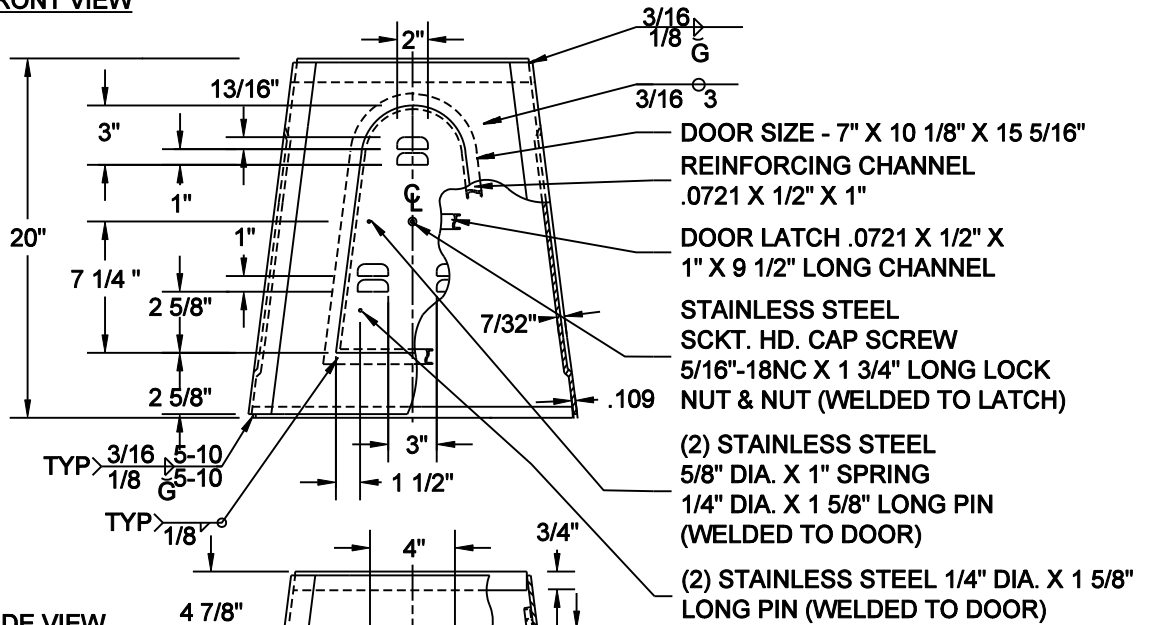


TOP VIEW

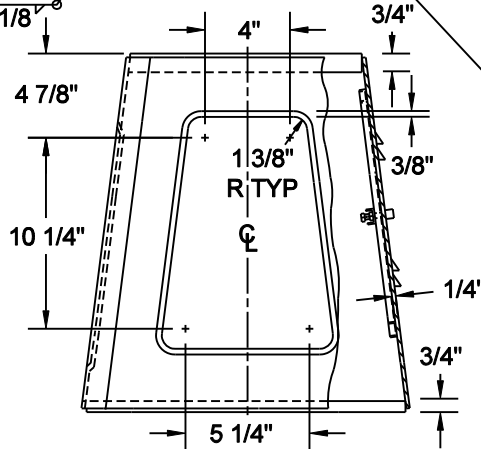
5/16"-18NC TAPPED HOLE
W/5/16"-18NC X 3/4" LONG
HEX HD. CAP SCREW (S.S)
& (2) BRASS WASHERS



FRONT VIEW



SIDE VIEW



NOTE:

1. SKIRT & BOTTOM PLATE MATERIAL- STAINLESS STEEL (TYPE 201) 60,000 PSI MIN. YIELD AFTER FABRICATION. TOP PLATE MATERIAL- LOW CARBON STEEL 36,000 PSI MIN. YIELD.
2. FINISH-EPOXY PRIMER
3. FINISH-UPS BROWN THERMO-SET ACRYLIC

NO SCALE



MINNEAPOLIS
DEPARTMENT OF PUBLIC WORKS

DRAWN: LPK

DATE: 1/1/11

APPROVED: DRP

DATE: 1/1/11

BASE - ST. LIGHT
TRANSFORMER 30'

STANDARD
PLATE
NO.
TRAF-3160