

ANCHOR RODS ON
15" BOLT CIRCLE
AT CONCRETE

1/4" X 1/4" DRAIN TROUGH

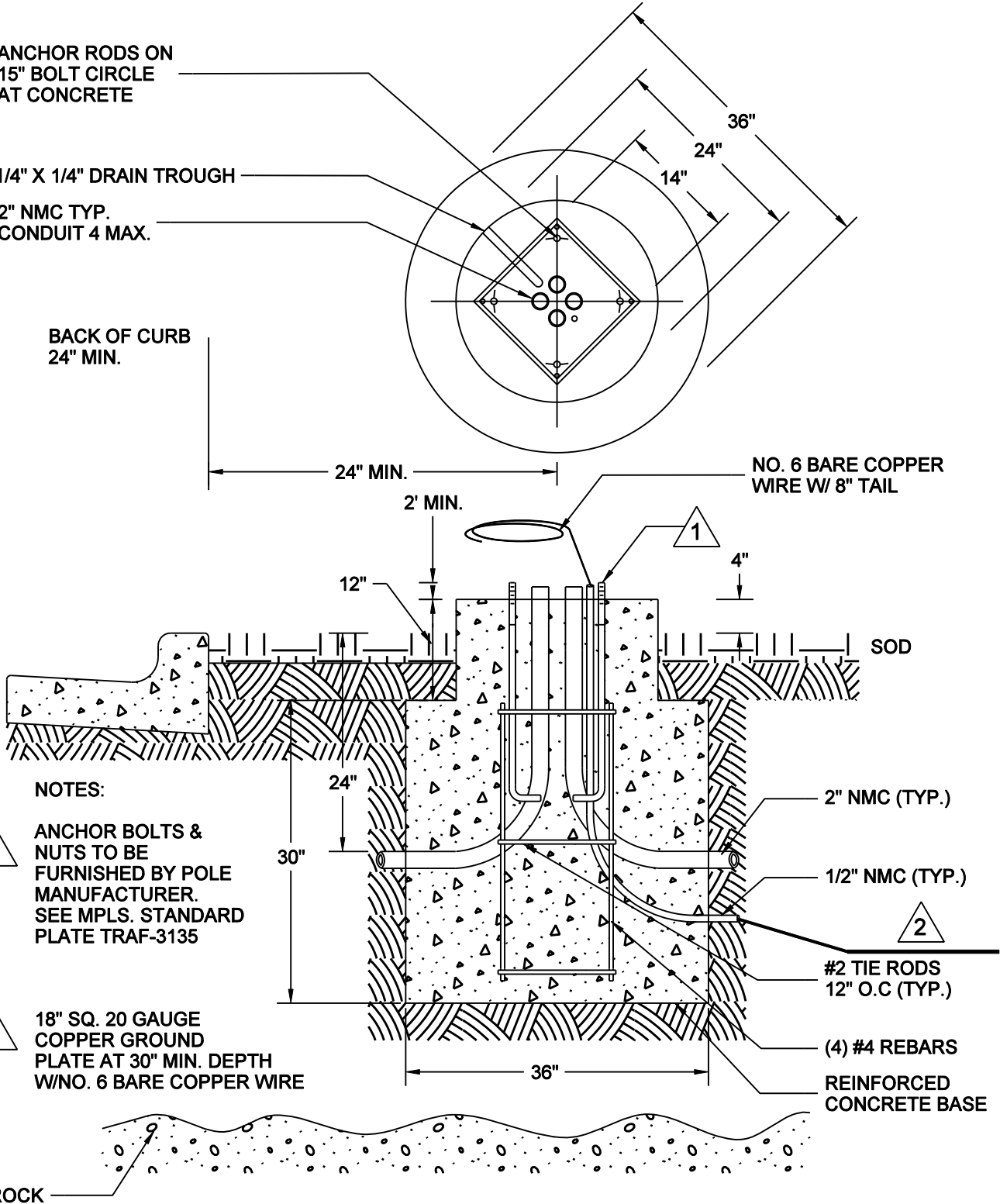
2" NMC TYP.
CONDUIT 4 MAX.

BACK OF CURB
24" MIN.

24" MIN.

2' MIN.

NO. 6 BARE COPPER
WIRE W/ 8" TAIL



NOTES:



ANCHOR BOLTS &
NUTS TO BE
FURNISHED BY POLE
MANUFACTURER.
SEE MPLS. STANDARD
PLATE TRAF-3135



18" SQ. 20 GAUGE
COPPER GROUND
PLATE AT 30" MIN. DEPTH
W/NO. 6 BARE COPPER WIRE

2" NMC (TYP.)

1/2" NMC (TYP.)

#2 TIE RODS
12" O.C (TYP.)

(4) #4 REBARS

REINFORCED
CONCRETE BASE

ROCK

NO SCALE



MINNEAPOLIS
DEPARTMENT OF PUBLIC WORKS

DRAWN: LPK

DATE: 1/1/11

APPROVED: DRP

DATE: 1/1/11

FOUNDATION - ST. LIGHT
18' - ROUND CAP SPREAD
REFERENCE PLATE: TRAF-3135

STANDARD
PLATE
NO.
TRAF-3066