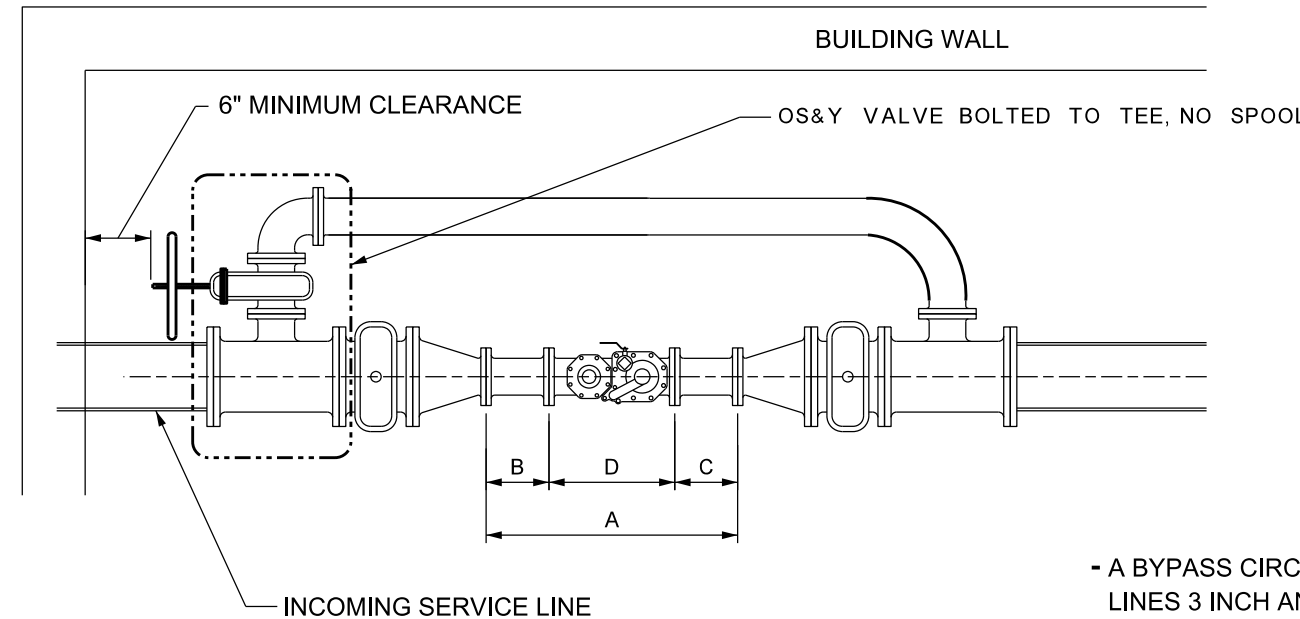


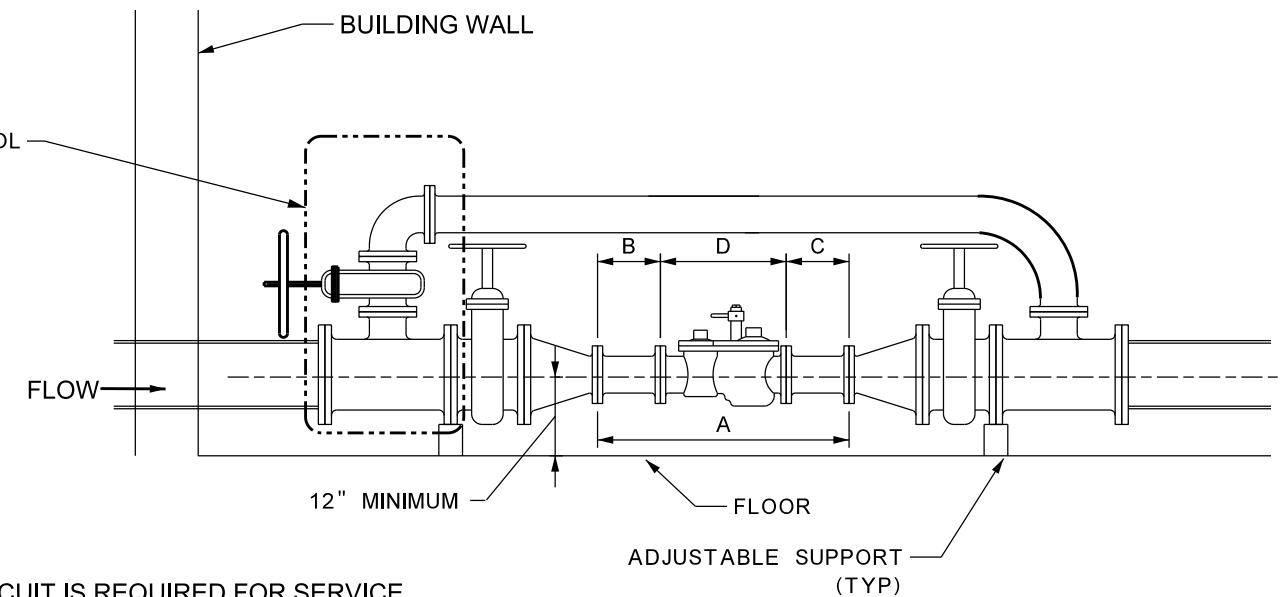
# COMMERCIAL METER BYPASS

TOP VIEW (PLAN VIEW)

MECH. JTS. ONLY UP TO  
LOCKING BYPASS VALVE.



SIDE VIEW (PROFILE VIEW)  
\*(WITH BYPASS OVER TOP)



METER SIZE	DIMENSION "A"
3" METER	36" MINIMUM
4" METER	41" MINIMUM
6" METER	49" MINIMUM

METER SIZE	DIMENSION "B"
3" METER	12" MINIMUM
4" METER	12" MINIMUM
6" METER	12" MINIMUM

METER SIZE	DIMENSION "C"
3" METER	6" MINIMUM
4" METER	8" MINIMUM
6" METER	12" MINIMUM

METER SIZE	DIMENSION "D"
2" METER	17"
3" METER	17"
4" METER	20"
6" METER	24"

- A BYPASS CIRCUIT IS REQUIRED FOR SERVICE LINES 3 INCH AND LARGER.
- BYPASS VALVE MUST BE AT LEAST THE SAME SIZE AS THE PERMITTED METER SIZE, LOCKABLE & BE LOCATED ON THE UPSTREAM TEE.
- METER ISOLATION VALVES UPSTREAM VALVE MUST BE THE SAME SIZE AS INCOMING SERVICE LINE.
- DOWNSTREAM VALVE MUST BE SAME SIZE OR LARGER, AS THE PERMITTED METER.
- CIRCUIT SIZE MUST BE PERMITTED METER SIZE OR LARGER.
- DIMENSION "B" MUST BE A STRAIGHT SPOOL A MINIMUM OF 12" FOR ALL 3", 4" AND 6" METERS
- 6" MINIMUM CLEARANCE REQUIRED BETWEEN CLOSEST EDGE OF ANY PART OF ASSEMBLY AND ANY FLOOR, WALL OR CEILING
- THE HEIGHT OF THE CENTERLINE ON INLET AND OUTLET PIPING ABOVE FLOOR FOR ALL METERS WILL BE TWELVE (12) INCHES TO THIRTY SIX (36) INCHES.
- WIDTH OF REQUIRED GASKETS MUST BE TAKEN INTO ACCOUNT FOR ALL DIMENSIONS.
- PLUMBING MATERIALS USED AFTER THE BYPASS VALVE MUST ADHERE TO CITY STANDARD INSIDE BLDG CODES (COPPER, BRASS, PVC, CAST IRON, PEX, DWV).
- GALVANIZED MATERIALS ARE NOT PERMITTED.
- ALL ISOLATION VALVES MUST BE A RISING STEM OS&Y TYPE OR FLANGED CAST IRON FULL PORT BALL VALVE.
- IF REDUCING SPOOLS ARE USED, THE METER SET MUST BE LENGTHENED TO ACCOMMODATE THEM.
- METER MUST BE INSTALLED TO ALLOW EASY ACCESS AND REMOVAL FOR METER MAINTENANCE.



DRW: ATX      DATE: 4/25/15  
APP: CD      DATE: 8/29/16

COMMERCIAL METER BYPASS

STANDARD  
PLATE  
NO.  
WATR-6003

NOT TO SCALE