



**CITY OF  
MINNEAPOLIS  
FIRE DEPARTMENT**

**ANNUAL STATISTICAL  
REPORT  
2013**



# **MINNEAPOLIS FIRE DEPARTMENT**

## **ANNUAL STATISTICAL REPORT**

**2013**



### **MISSION STATEMENT**

**Members of the Minneapolis Fire Department are thoroughly trained and ready to protect lives, property and the environment by rapidly responding to emergencies and hazardous situations.**

**We are committed to prevention by proactively working with the community to reduce risk to life, property and the environment.**



# CITY OF MINNEAPOLIS

**Mayor**  
R. T. Rybak

**City Coordinator**  
Paul Aasen

## City Council

Ward 1 Kevin Reich  
Ward 2 Cam Gordon  
Ward 3 Diane Hofstede  
Ward 4 Barbara Johnson  
Ward 5 Don Samuels  
Ward 6 Robert Lilligren  
Ward 7 Lisa Goodman

Ward 8 Elizabeth Glidden  
Ward 9 Gary Schiff  
Ward 10 Meg Tuthill  
Ward 11 John Quincy  
Ward 12 Sandra Colvin Roy  
Ward 13 Betsy Hodges



## Minneapolis Fire Department Chief Officers and Staff

**Fire Chief**  
John Fruetel

**Assistant Fire Chiefs**  
Charles Brynteson  
Cherie Penn

**Deputy Chiefs, Suppression**  
Harold Breffle  
Michael Dickinson  
Donald Leedham

**Deputy Chief, Training**  
Raymond Cruz/  
Jonathan Klepp

**Fire Marshal**  
Perry Ebner

**Employee Assistance Program**  
Mark Olson

**Deputy Chief,  
Information &  
Technology (acting)**  
Timothy Hillmeyer

**Deputy Chief,  
Personnel (acting)**  
Jennie Kawaters/  
Melanie Rucker

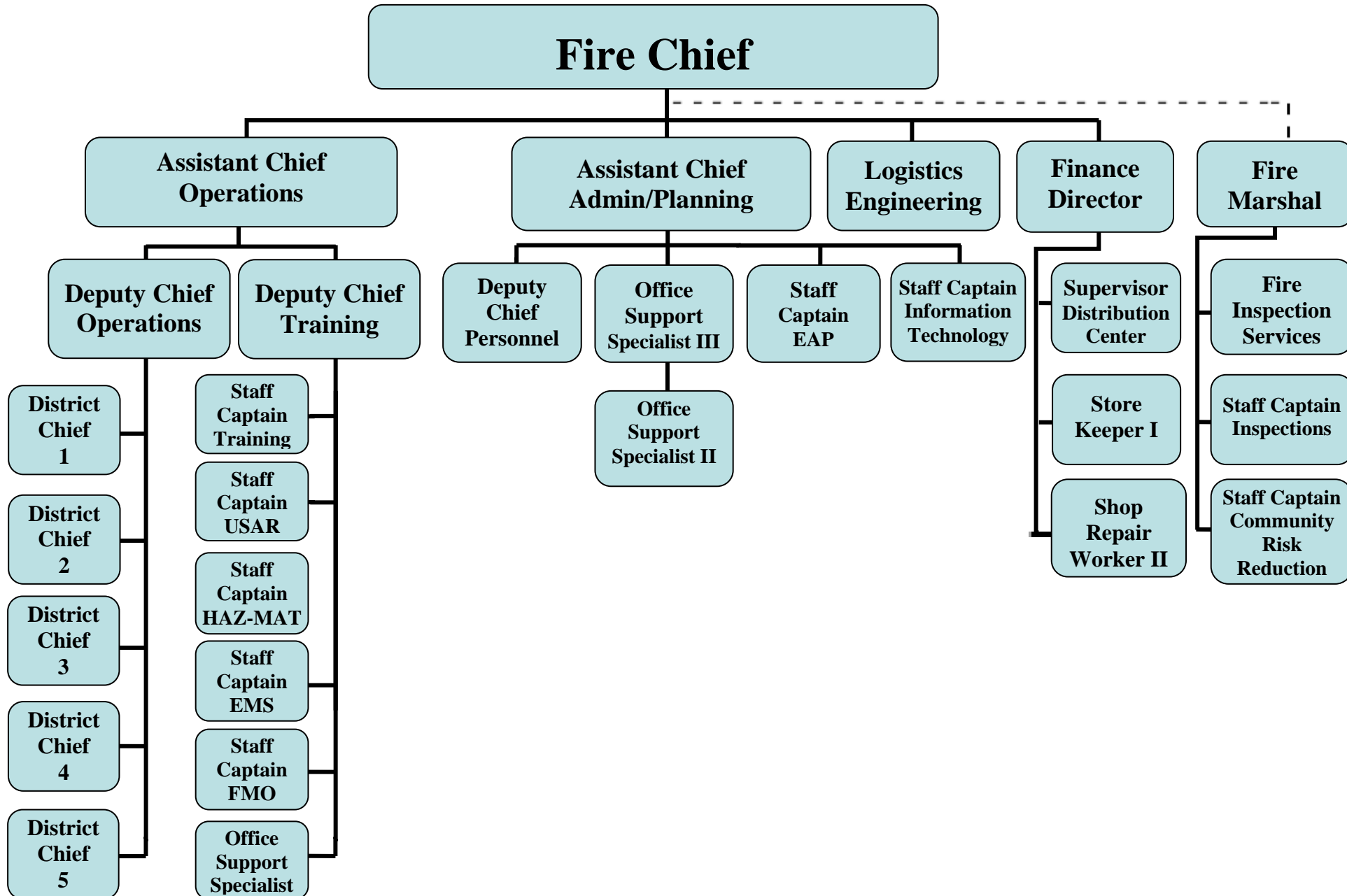
**Finance & Logistics Director**  
Luke Scardigli

**Deputy Chief, Logistics &  
Engineering**  
Raymond Cruz

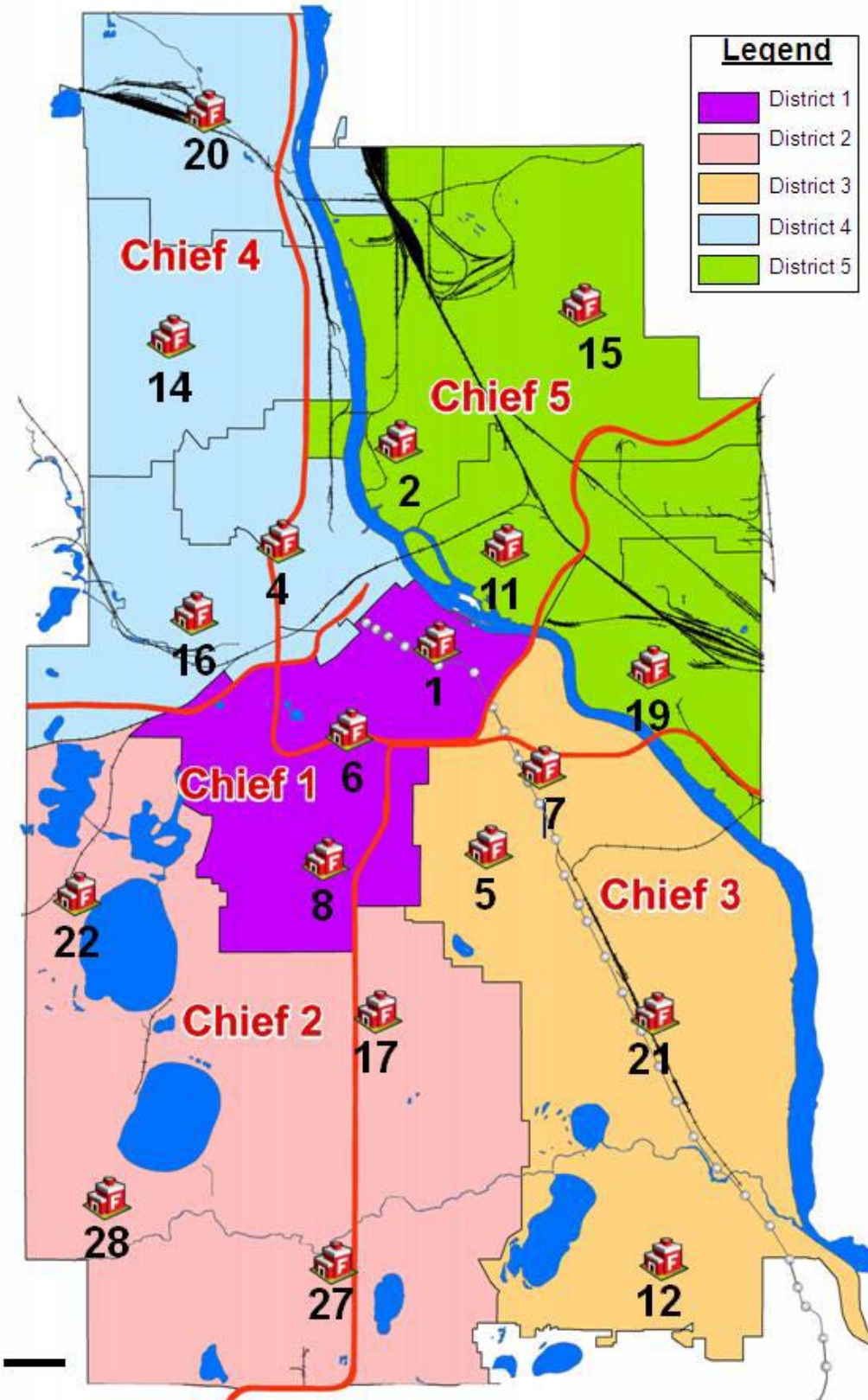
**Battalion Chiefs**  
Timothy Baynard  
Micheal Carswell  
Richard Christensen  
Michael Dahlberg  
David DeWall  
Stephen Dziedziec  
Steven Ebert  
Anthony Kuczek  
Randall Miller  
Kathleen Mullen  
Edward Otis  
Gary Piekarczyk  
Kevin Rousseau  
Todd Steinhilber  
Bryan Tyner  
Todd White



# Minneapolis Fire Department Standard Operating Procedures 1-400.00 - Organizational Chart



# Minneapolis Fire Department Station Locations



## Station Locations

- 01 - 530 3rd St S
- 02 - 143 13th Ave NE
- 04 - 1101 6th St N
- 05 - 2700 Bloomington Ave S
- 06 - 121 15th St S
- 07 - 2000 Franklin Ave E
- 08 - 2749 Blaisdell Ave S
- 11 - 229 6th St SE
- 12 - 5401 33rd Ave S
- 14 - 2002 Lowry Ave N
- 15 - 2701 Johnson Ave NE
- 16 - 1600 Glenwood
- 17 - 330 38th St E
- 19 - 200 Ontario St SE
- 20 - 4646 Humboldt Ave N
- 21 - 3209 38th St E
- 22 - 3025 Market Plaza
- 27 - 5410 Nicollet Ave S
- 28 - 2810 50th St W

**MINNEAPOLIS FIRE  
DEPARTMENT  
2013 SUMMARY**



Population	382,578
Land Area (sq miles)	58.7
2013 Budget	\$54,014,000

<b><u>PERSONNEL</u></b>	(effective 12/31/13)
Fire Chief	1
Assistant Chiefs	2
Deputy Chiefs	6
Battalion Chiefs	15
Fire Marshal	1
Staff Captains	7
Captains	94
Fire Motor Operators	95
Firefighters	164
Fire Investigators	3
<b>Total Sworn</b>	<b>388</b>
Civilians	7
<b>Total Personnel</b>	<b>395</b>

Battalions	5
Fire Stations	19
Engine Companies	19
Ladder Companies	6
Heavy Rescues	2
Command Van	1
Salvage Rig	1

**FIRE LOSS**

Total Structure Fires	623
Loss	\$9,413,006
Total Vehicle Fires	209
Loss	\$783,117
Total Other Fires	368
Loss	\$67,191
Total Fire Loss	\$10,263,314
<i>(excludes mutual/auto aid &amp; exposures)</i>	

**MULTIPLE ALARM FIRES**

2-2 Alarms	12
3-3 Alarms	1
Total Multiple Alarms	13
Total Loss	\$4,820,000

**CIVILIAN FIRE VICTIMS**

Deaths	2
Injuries	27

**FIREFIGHTER INJURIES**

Lost Time Injuries	28
No Lost Time Injuries	148
Total FF Injuries	176

Fires	1,200
EMS & Rescue	25,815
False Alarms	4,457
Hazardous Conditions	1,070
Other Incidents	5,571
Mutual/Auto Aid	20

**Total Calls for Service 38,133**

**Average Response Time  
4 minutes, 04 seconds**

- 82.8% of all fire calls responded to in less than 5 minutes
- 78.5% of all EMS calls responded to in less than 5 minutes

**APPARATUS RESPONSES**

<u>Company</u>	<u>Total Runs</u>
Engine 6	3,902
Engine 14	3,372
Engine 1	3,339
Engine 7	3,334
Engine 8	2,970
Engine 5	2,675
Engine 16	2,491
Engine 21	2,289
Engine 4	2,220
Engine 17	2,215
Engine 11	2,154
Engine 20	1,910
Engine 15	1,563
Engine 2	1,492
Engine 19	1,278
Engine 27	1,239
Engine 22	1,017
Engine 12	857
Engine 28	824
Ladder 11	2,149
Ladder 3	1,764
Ladder 10	1,308
Ladder 4	1,135
Ladder 2	900
Ladder 5	632
Rescue 9	1,261
Rescue 1	1,231

**Total Fire Company Familiarizations 3,084**

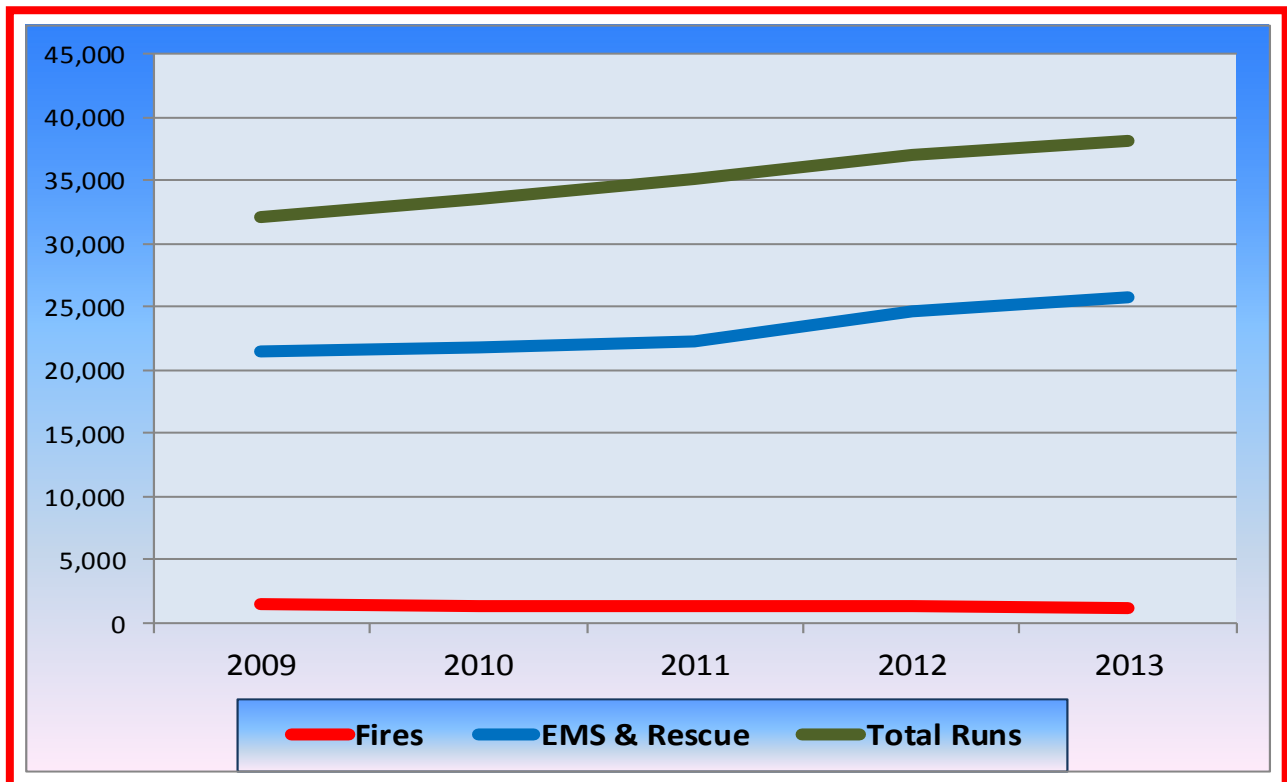
**Community Outreach**  
School Attendees 5,955  
Adult/Family Attendees 5,000

**Structural Fires with hose lines laid, except residential garages**

- First-in rig on scene in less than 5 minutes 88.3% of the time
- 14 FF on scene of initial alarm in less than 9 minutes, 20 seconds 75% of the time (not including upgrades)

## Five Year Trends 2009 - 2013

### Total Calls for Service, Total Fire Runs and Total Rescue & EMS Runs

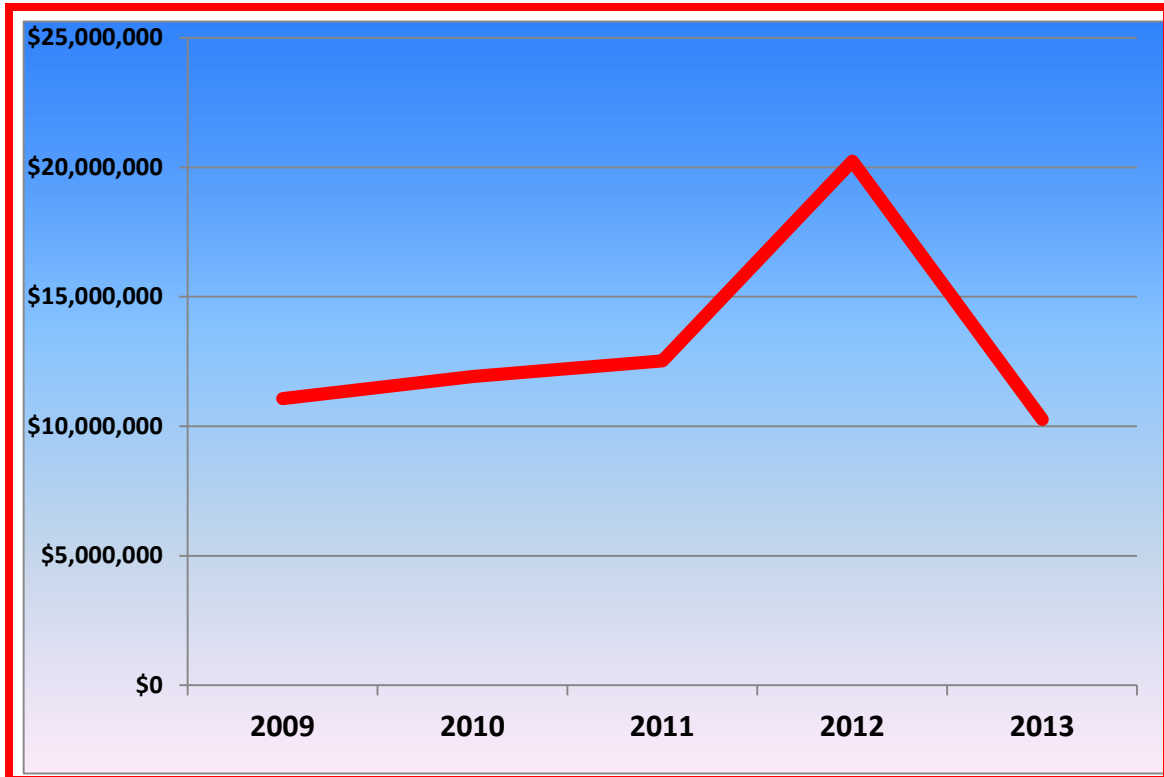


	Total Calls for Service	Rescue & EMS Runs	Fire Runs
2009	32,191	21,400	1,401
2010	33,601	21,781	1,392
2011	35,204	22,247	1,367
2012	37,011	24,668	1,362
2013	38,133	25,815	1,200



# Five Year Trends 2009 - 2013

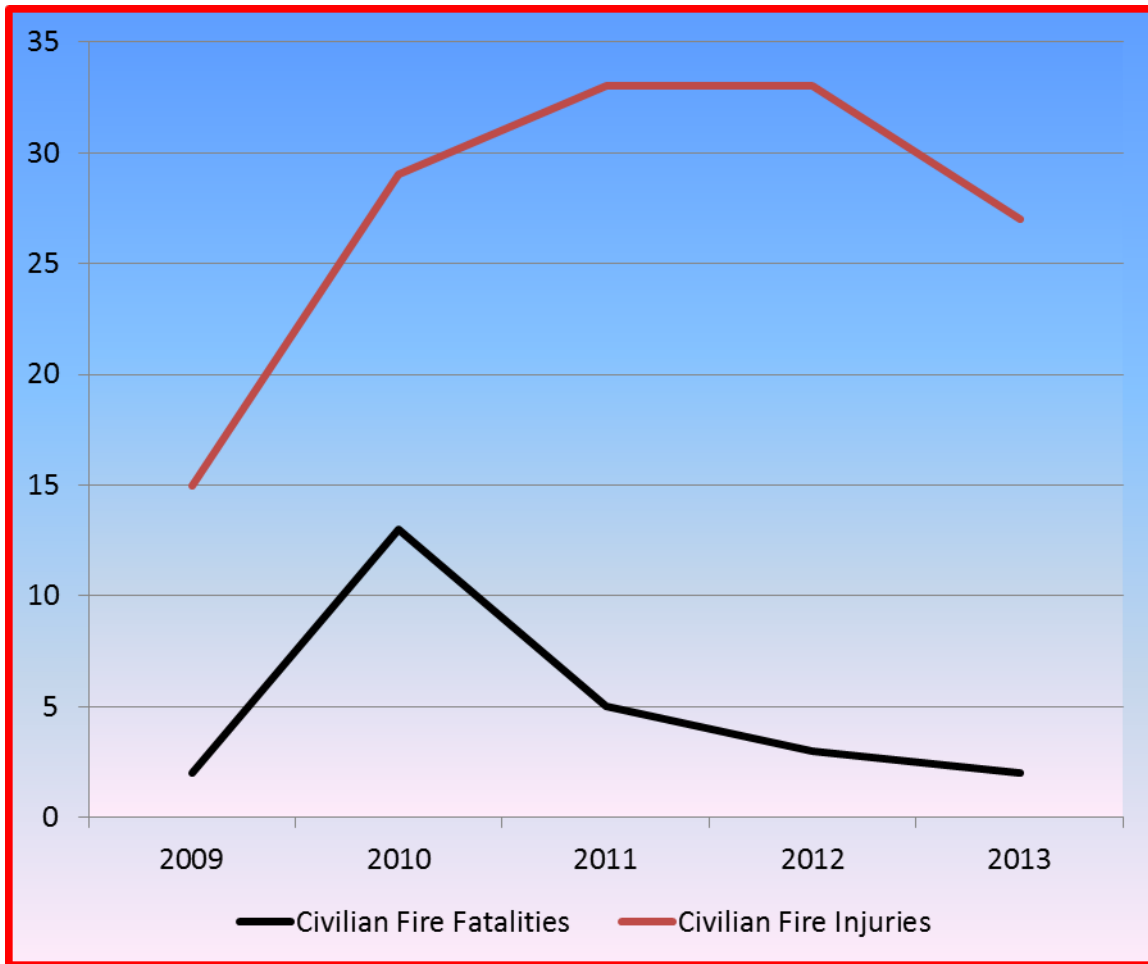
## Total Fire Loss



Total Fire Loss	
2009	\$11,065,130
2010	\$11,918,235
2011	\$12,530,310
2012	\$20,235,279
2013	\$10,263,314

# Five Year Trends 2009 - 2013

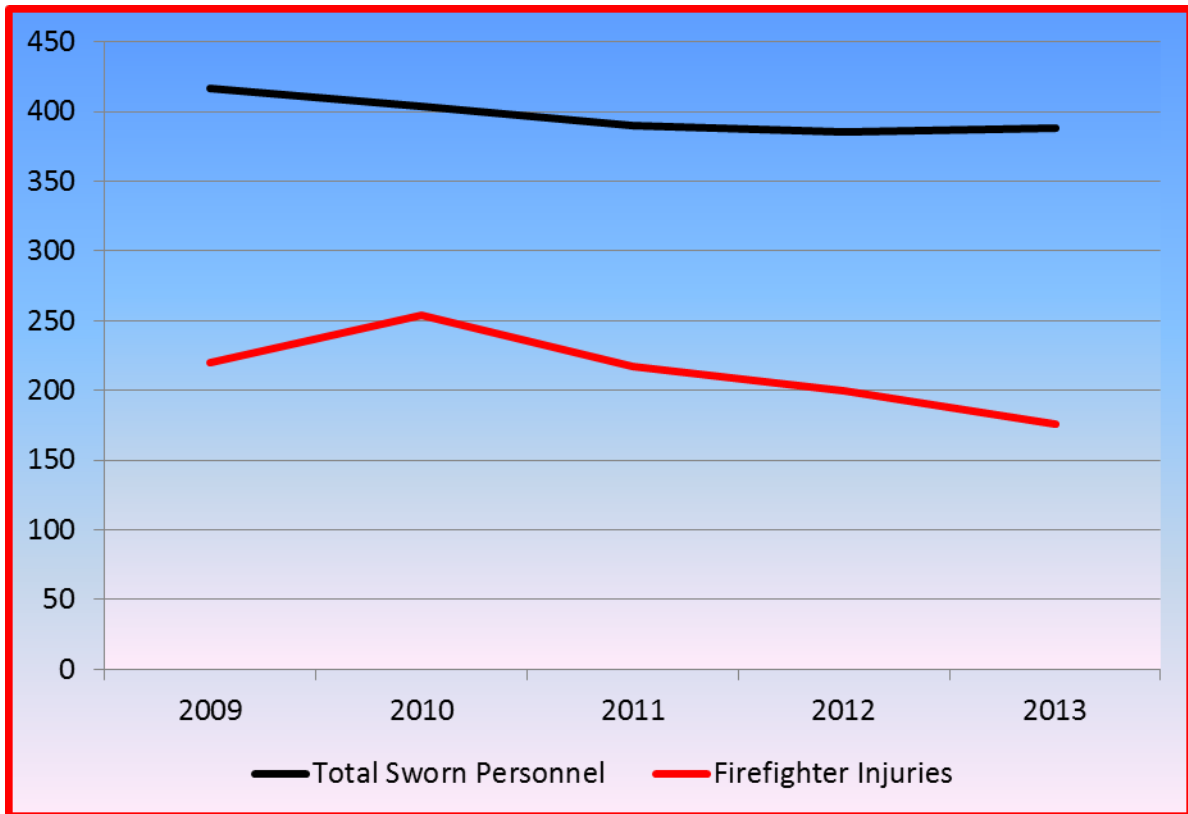
## Civilian Fatalities and Injuries



	Civilian Fire Fatalities	Civilian Fire Injuries
2009	2	15
2010	13	29
2011	5	33
2012	3	33
2013	2	27

## Five Year Trends 2009 – 2013

### Total Sworn Personnel and Firefighter Injuries



	Total Sworn Personnel	Firefighter Injuries
2009	417	220
2010	404	254
2011	390	217
2012	385	200
2013	388	176

**2013 Positions by Division  
(sworn & civilian as of 12/31/2013)**

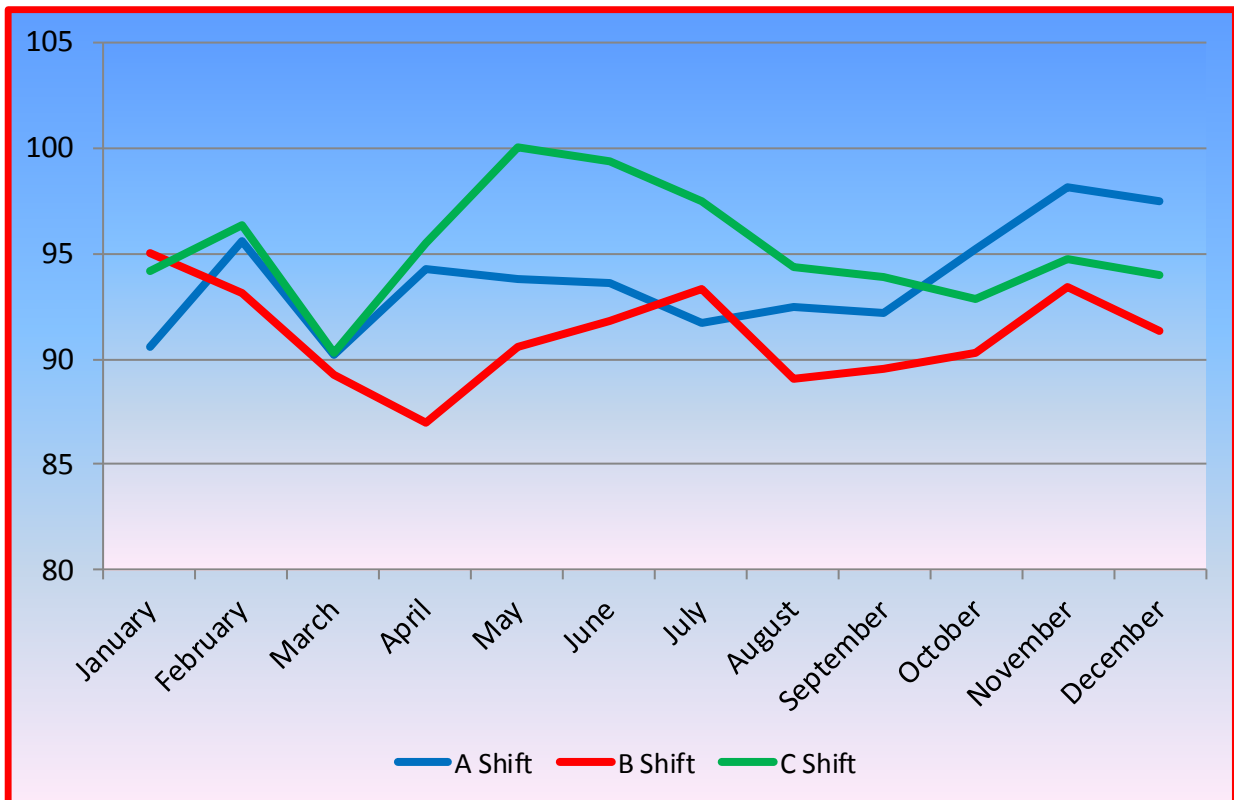
Division	Total	Sworn	Civilian
Emergency Response	374	374	0
Fire Prevention Bureau	3	3	0
Headquarters Staff & Fire Stores	13	7	6
Training Staff	5	4	1

**Sworn Personnel Summary (12/31/2013)**

	Total Number	% of Total
<b>Total Sworn Personnel</b>	<b>388</b>	
<b>Total People of Color</b>	<b>126</b>	<b>32.47%</b>
<b>Total Males</b>	<b>333</b>	<b>85.82%</b>
White	224	67.27%
Black	59	17.72%
American Indian	18	5.41%
Hispanic	16	4.80%
Asian	8	2.40%
Two or more/none specified	8	2.40%
<b>Male People of Color Totals</b>	<b>109</b>	<b>32.73%</b>
<b>Total Females</b>	<b>55</b>	<b>14.18%</b>
White	38	69.09%
Black	7	12.73%
Hispanic	4	7.27%
American Indian	3	5.45%
Two or more	2	3.64%
Asian	1	1.82%
<b>Female People of Color Totals</b>	<b>17</b>	<b>30.91%</b>

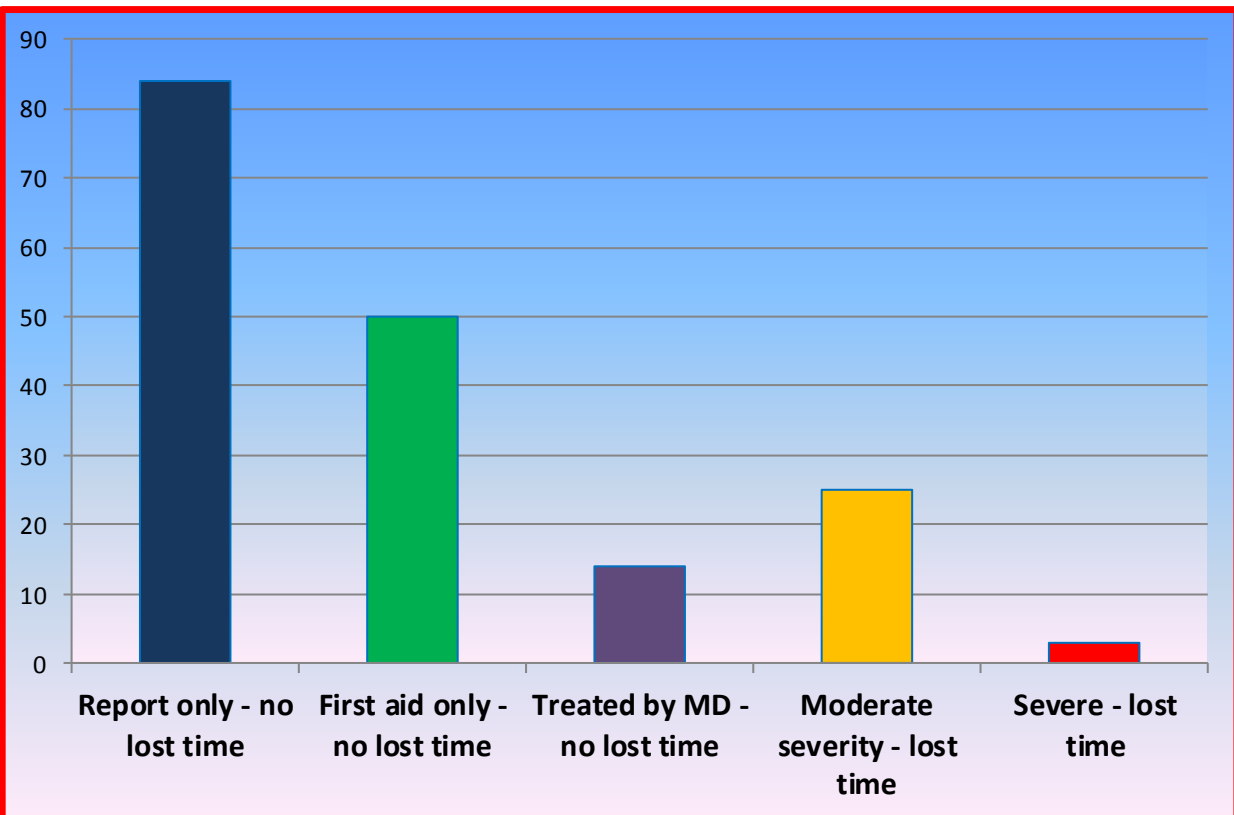
## 2013 Average Daily Staffing (includes hirebacks)

Month	A Shift	B Shift	C Shift	Total
January	90.59	94.99	94.17	93.30
February	95.57	93.17	96.35	95.08
March	90.24	89.23	90.29	85.72
April	94.30	87.01	95.53	92.28
May	93.76	90.55	100.00	94.64
June	93.64	91.85	99.38	91.73
July	91.67	93.35	97.49	94.28
August	92.46	89.11	94.40	92.07
September	92.17	89.54	93.88	91.86
October	95.18	90.33	92.89	92.88
November	98.12	93.40	94.72	95.41
December	97.46	91.38	93.94	94.17
<b>Totals</b>	<b>93.76</b>	<b>91.16</b>	<b>95.25</b>	<b>93.40</b>



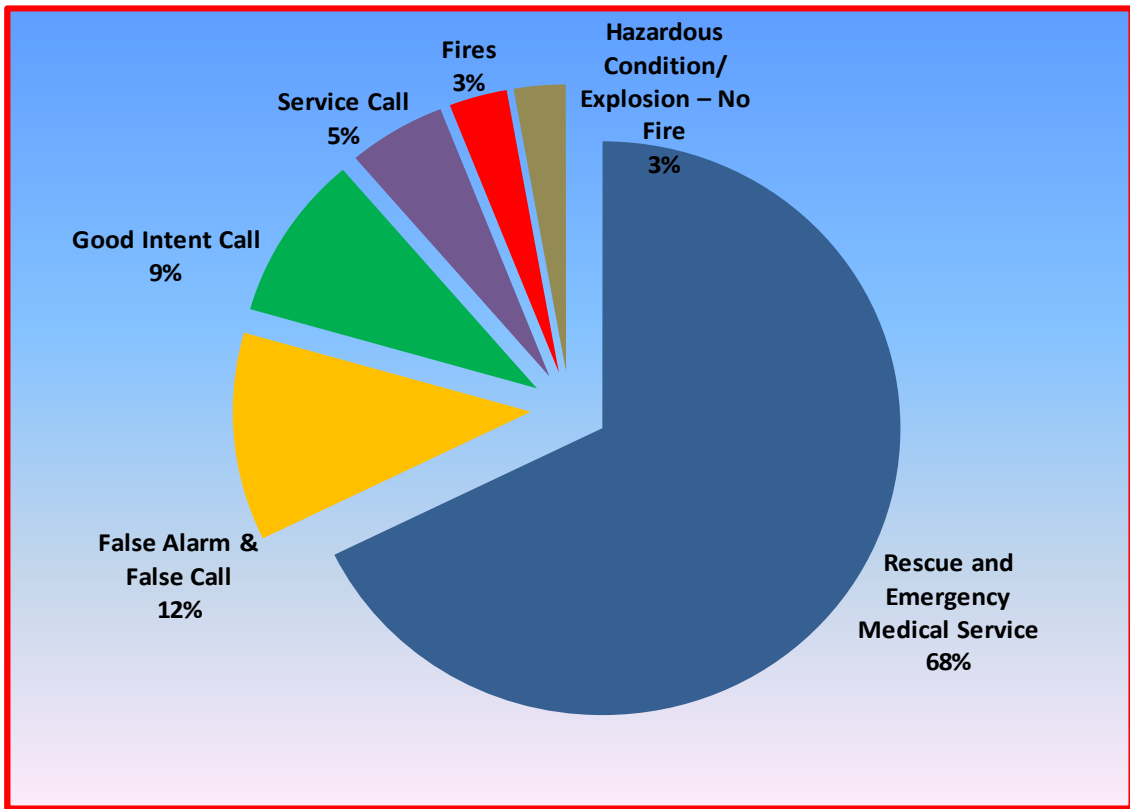
## 2013 Firefighter Injuries

Report only - no lost time	84
First aid only - no lost time	50
Treated by MD - no lost time	14
Moderate severity - lost time	25
Severe - lost time	3
<b>Total</b>	<b>176</b>



## 2013 Total MFD Calls for Service

Rescue and Emergency Medical Service	25,815
False Alarm & False Call	4,457
Good Intent Call	3,544
Service Call	2,017
Fires	1,200
Hazardous Condition/Explosion – No Fire	1,070
Special Incident/Weather/Mutual-Auto Aid	30
<b>Total</b>	<b>38,133</b>

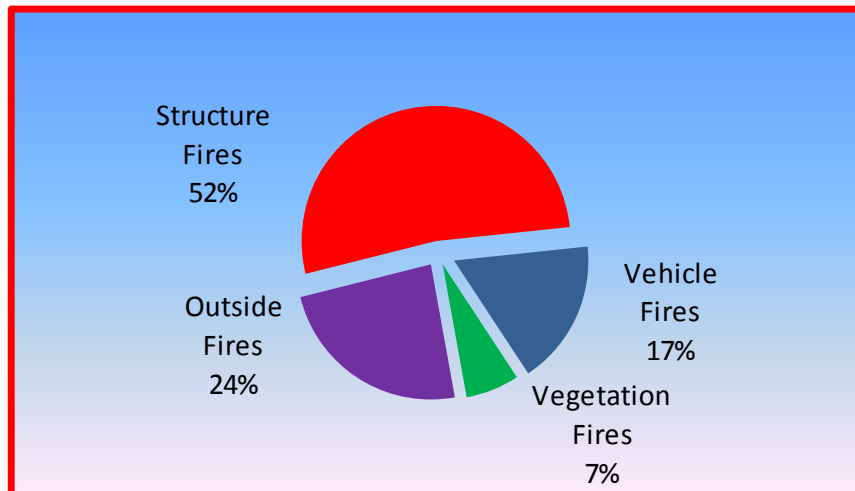


## 2013 Fires by Incident Type

(includes exposure and mutual aid fires)

Incident Type	Count	Estimated Loss (in dollars)
Building fire	313	9,367,156
Fires in structures other than in a building	15	25,601
Cooking fire, confined to container	247	32,594
Chimney or flue fire, confined to chimney or flue	1	0
Fuel burner/boiler malfunction, fire	4	4,070
Commercial Compactor fire, confined	2	0
Trash or rubbish fire, contained	47	1,885
Fire in portable building, fixed location	3	1,700
Passenger vehicle fire	201	740,177
Road freight or transport vehicle fire	7	43,000
Off-road vehicle or heavy equipment fire	2	0
Natural vegetation fire, Other	34	1,125
Forest, woods or wildland fire	2	0
Brush, or brush and grass mixture fire	23	100
Grass fire	19	0
Outside rubbish, trash or waste fire	152	5,090
Dumpster or other outside trash receptacle fire	102	9,346
Special outside fire, Other	28	6,030
Outside storage fire	1	0
Outside equipment fire	6	45,500
Outside gas or vapor combustion	1	0
<b>Totals</b>	<b>1,210*</b>	<b>\$10,283,314</b>

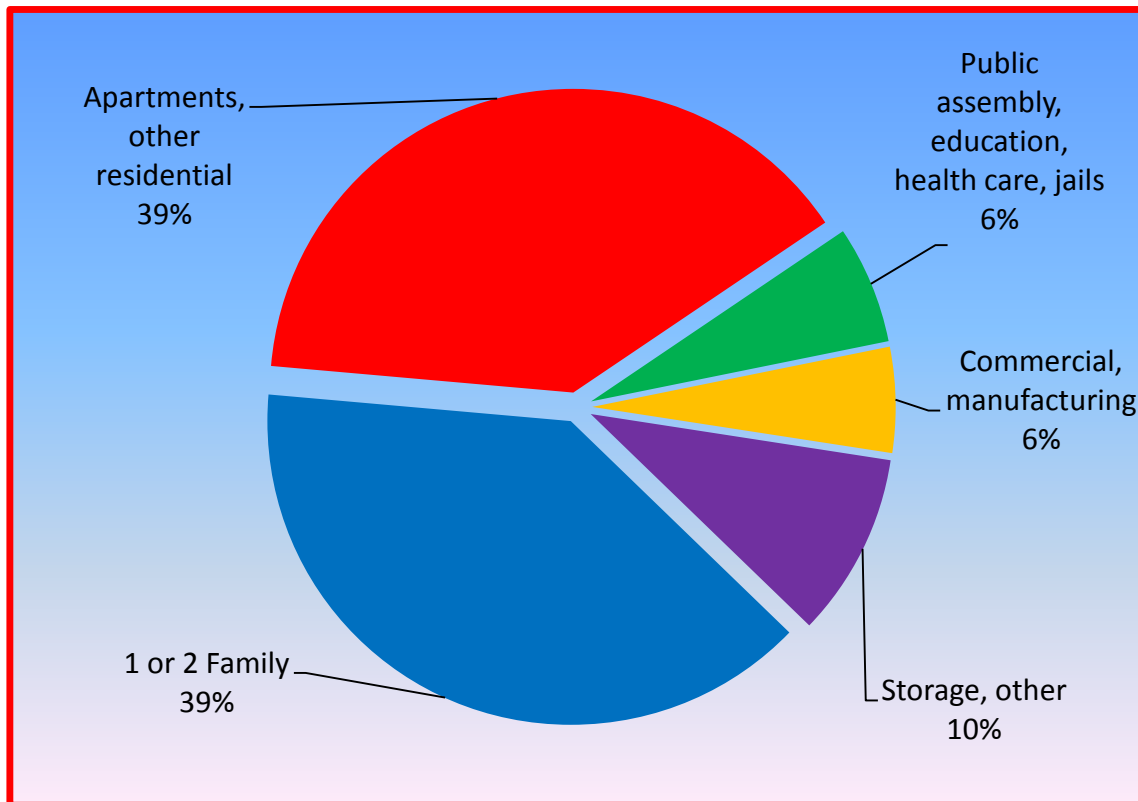
\*this total includes exposure fires





## 2013 Structure Fires by Property Use

Structure Use	Number	Estimated Loss (in dollars)
1 or 2 Family	244	3,002,261
Apartments	228	1,319,516
Hotels & Motels, Other Residential	16	11,700
Public Assembly	17	57,820
Schools and Colleges	9	19,705
Health Care & Jails	13	20,592
Stores & Offices	29	3,692,651
Industry, Utility & Manufacturing	6	39,500
Storage (including residential garages)	61	1,239,250
<b>Totals</b>	<b>623</b>	<b>\$9,413,006</b>



## 2013 Multiple Alarm Incidents

2-2 Alarms	12
3-3 Alarms	1
<b>TOTAL MULTIPLES</b>	<b>13</b>

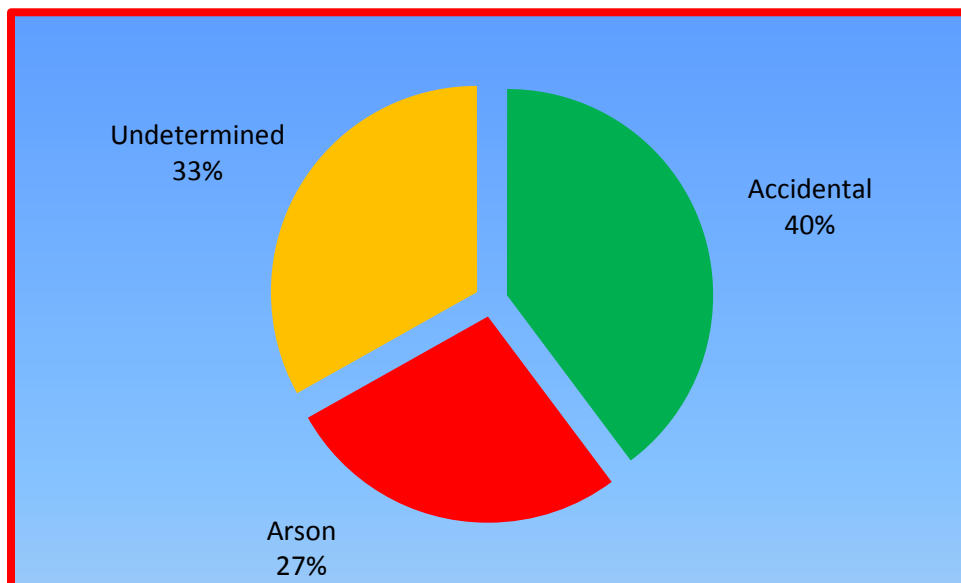
<u>Date</u>	<u>Time</u>	<u>Location</u>	<u>Occupancy Type</u>	<u>Loss</u>
<b><u>2-2 Alarms</u></b>				
Jan-13	1228	3121 Pillsbury Avenue South	High-Rise Apartment	\$6,500
Feb-06	154	3831 Dupont Avenue North	House	\$70,000
Feb-19	112	216 18th Avenue North	Manufacturing	\$500,000
Apr-16	403	2418-2420 Elliot Avenue South	Duplex	\$210,000
Apr-21	625	349 East Lake Street	Commercial/Residential	\$10,000
Apr-25	302	2500 Chicago Avenue South	Commercial	\$550,000
Apr-29	1203	2416-18 Bryant Avenue South	Duplex	\$250,000
Jul-31	2331	2812 University Avenue SE	Commercial	\$1,781,000
Oct-09	1147	3309 2nd Avenue South	Duplex	\$15,500
Oct-15	2209	2500 Washington Avenue North	Vehicle/Warehouse	\$40,000
Oct-19	2001	3435 Colfax Avenue South	Apartment	\$37,000
Nov-20	40	3421 Portland Avenue South	Apartment	\$325,000
<b><u>3-3 Alarms</u></b>				
Jan-24	1751	5340 Lyndale Avenue South	Commercial	\$1,025,000
			<b>TOTAL LOSS</b>	<b><u>\$4,820,000</u></b>

## 2013 Fire Investigation Statistics

	# Fires Investigated	# Arson Fires	% Arson Fires
January	25	5	20%
February	21	5	24%
March	16	3	19%
April	36	7	20%
May	47	18	38%
June	42	13	31%
July	42	15	36%
August	39	15	38%
September	24	7	29%
October	20	4	20%
November	26	4	15%
December	24	2	8%

There were 362 total fires investigated in 2013

Accidental	144	40%
Arson	98	27%
Undetermined	120	33%



## 2013 Emergency Medical Service Incident Types



Incident Type	Number
EMS call, excluding vehicle accident with injury	10,137
EMS – arrive and cancelled before PT contact or no PT	9,409
EMS – assist medics, did not provide any BLS treatment	4,200
Motor vehicle accident with injuries	447
Medical assist – assist EMS crew	287
Motor vehicle accident with no injuries	281
Motor vehicle accident with injuries – no PT contact	224
EMS-DOA – no BLS provided	219
Removal of victim(s) from stalled elevator	172
Lock-in	138
Motor vehicle/pedestrian accident	131
Motor vehicle/self-propelled accident – bike/wheelchair	84
Swimming/recreational water area rescue	18
Search for person in water	12
Extrication of victim(s) from machinery	12
Swift water rescue	12
Extrication of victim(s) from vehicle	9
Watercraft rescue	7
Emergency medical service, other	6
Extrication of victim(s) from building/structure	3
Trench/below grade rescue	3
High-angle rescue	3
Rescue, EMS incident, other	2
Extrication, rescue, other	1
Confined space rescue	1
Trapped by power lines	1
<b>TOTAL</b>	<b>25,819*</b>

*\*total includes 4 mutual aid runs*



## 2013 Emergency Medical Service Chief Patient Complaint

Chief Complaint	Number
Respiratory distress	1,853
Chest pain	1,365
Trauma	1,230
Altered level of consciousness	1,220
Impression/assessment, other	739
Pain, general	637
Seizure	615
Hemorrhaging/bleeding	543
Back pain	334
Syncope, fainting	327
Flu-like symptoms	289
Stroke/CVA	261
Abdominal pain	219
Cardiac arrest	185
General illness	178
Overdose/poisoning	162
Headache	141
Diabetic symptom	123
Cardiac dysrhythmia	107
Behavioral/mental status, psychiatric disorder	103
Allergic reaction, excludes stings & venomous bites	91
Pregnancy/OB	86
Vaginal bleeding	44
Respiratory arrest	30
Suicide attempt	28
Airway obstruction	24
Obvious death	15
Eye problem	14
Burns	13
Sting/bite	12
Hyperthermia	9
Hypothermia	7
Hypovolemia	6
Electrocution	3
Chemical discharge	1
Apparent sexual assault	1
<b>TOTAL</b>	<b>11,015</b>

# 2013 Training Division Report

## Company Level & Training Division Classes

<b>Company Schools – Total Hours</b>	<b>64,704</b>
<b>Hours of Training per Employee</b>	<b>166</b>

### Administrative – 735 hours

<p>Employee Performance Appraisal  MFD Communications  Firehouse Software Training  Intersection Safety</p>	<p>Ethics Training (video)  Visinet Mobile Training  City Ethics Training (on-line)</p>
---	---

### Basic Practices – 26,492 hours

<p>Self-Contained Breathing Apparatus  Advancing Lines  Replacing Burst Section  Hose Loading &amp; Bundles  Straight Beam Ladders  30-35 Ft. Extension Ladders  Using Ladders to Advance Lines  High Rise Operations  Back Stretching  Elevate Hose Lines  Aerial Standpipe  Raise Equipment  RIT</p>	<p>Ladder Rescues  Rescue Basket  Ventilation  Life Rope Slide  Master Streams  Relay Operations  Washing &amp; Folding of Salvage Covers  Sprinkler Systems  Foam Equipment  FMO Manual  May Day  Daily Safety Briefing</p>
--	--

### EMS Company Schools – 2,693 hours

<p>Airway Management &amp; Equipment  Defibrillator Operation  Automatic B/P Monitor Operation  SOPs for Transfilling Medical O2  Patient Care Guidelines  Infection Control Policy  Introduction to EMS  Well-Being EMS  Medical/Legal EMS Issues  Human Body  Baseline Vital Signs  Lifting &amp; Moving Patients  Airway Management  Patient Assessment  Communications  Pharmacology</p>	<p>Respiratory Emergencies  Cardiovascular Emergencies  Neurological Emergencies  Acute Abdomen  Diabetic Emergencies  Allergic Reactions  Substance Abuse/OD  Environmental Emergencies  Behavioral Emergencies  OB/GYN  Kinematics of Trauma  Bleeding  Shock  Soft Tissue Injuries  Eye Injuries  Face &amp; Throat Injuries</p>
--	---

Chest Injuries  
 Abdominal & Genital Injuries  
 Musculoskeletal Care  
 Head & Spine Injuries  
 Pediatric Assessment  
 Pediatric Medical  
 Pediatric Trauma  
 Geriatric Assessment  
 Ambulance Operations  
 Gaining Access to Patient  
 Special EMS Operations  
 Advanced Airway (Medic)  
 BLS Review  
 NREMT Skills – PA Medical  
 NREMT Skills – PA Trauma  
 NREMT Skills – Bleeding Control

NREMT Skills – Spine Immobilize  
 NREMT Skills – Joint Splinting  
 NREMT Skills – Oxygen Admin  
 Infectious Diseases  
 Bloodborne Pathogen Training  
 Communicable Disease  
 Biological Terrorism  
 EMS Safety Topic  
 CPR Devices Study  
 Updated CPR Guidelines  
 Spanish for EMS  
 MFD Functional Weight Training Program  
 Basic Animal Rescue Training  
 CPR Self-Study  
 Anaphylaxis

**Essentials of Firefighting – 3,259 hours**

Firefighter Orientation & Safety  
 Fire Behavior  
 Building Construction  
 Firefighter Personal Protective  
 Equipment  
 Portable Extinguishers  
 Ropes & Knots  
 Rescue & Extrication  
 Forcible Entry  
 Ground Ladders  
 Ventilation  
 Water Supply  
 Fire Hose

Fire Streams  
 Fire Control  
 Fire Detection, Alarm & Suppression  
 System  
 Loss Control  
 Protecting Evidence for Fire Cause  
 Determination  
 Fire Department Communications  
 Fire Prevention and Public Fire  
 Education  
 Fire Service Elevator Operation  
 Explosion Dynamic

**Hazardous Materials – 1,825 hours**

Introduction to Hazardous Materials  
 Managing the Hazardous Materials  
 Incident  
 Explosive Emergencies  
 Gas Emergencies  
 Understanding Cryogenics  
 Responding to Compressed Gas  
 Emergencies  
 Responding to Liquefied Gas  
 Emergencies  
 Flammable & Combustible Liquid  
 Emergencies  
 Oxidizer Emergencies  
 Responding to Oxidizer Emergencies  
 Poison Emergencies

Responding to Poison Emergencies  
 Radioactive Emergencies  
 Understanding Radioactive  
 Emergencies  
 Responding to Radioactive Material  
 Emergencies  
 Corrosive Emergencies  
 Responding to Corrosive Emergencies  
 Miscellaneous Hazardous Materials  
 Emergencies  
 Spills, Open Water, Moving Water, Sewer  
 Systems  
 WMD Response  
 Decontamination

**MFD Lesson Plans – 5,141 hours**

Driver Training, Truck	Ropes & Knots
Elevator Escape & Rescue Procedures	Salvage & Overhaul
Fire Department Connections	Saws-All
Fire Detection & Alarm Systems	Self-Contained Breathing Apparatus
Fire Hose	Station Journals
Fire Service Terminology	Super-Vac Smoke Ejectors
Foam Equipment & AFFF	Target Saw/K12 Operation
Forcible Entry	Vehicle Accidents (MFD Apparatus)
Glassmaster Tool	Ventilation Operations
Hurst Tool Operations	Water Rescue Operations
Ladders, Care & Maintenance	Scott Thermal Imager
Light Plant Uses & Operations	MSA Thermal Imager
MFD Rescue Boat Operations	Hydra Ram
Multiple Alarm Procedures	Quint Operations
Natural Gas Emergencies	Aerial Platform Operation
Personal Protective Equipment	Incident Critique
Portable Fire Extinguishers	Streets & Routes
Public Relations	Motorola 800 MHz
Rapid Intervention Team (RIT) Operations	Cavitation/Pumping Training
Refilling SCBA Bottles & Compressor	EOTF Burn Building Ops

**Training Division Courses – 10,427 hours**

AHA CPR	FF2 Off-Site Skills/Education
HCMC EMS Orientation	Hazmat 1 <sup>st</sup> Responder Lecture
EMT Practical Skills	Hazmat 1 <sup>st</sup> Responder Practical Skills
Administrative Issues	Hazmat 1 <sup>st</sup> Responder Tests & Quizzes
EMS Tests & Quizzes	MFD SOPs Written Test
EMT Lecture on Textbook	MFD SOPs Practical Test
FF1 Lecture on Textbook	MECC/Dispatch Center
FF1 Testing & Quizzes	Hazmat Technician Lecture
FF1 Practical Skills	Hazmat Technician Practical Skills
FF1 Off-Site Skills/Education	Hazmat Technician Tests & Quizzes
FF2 Lecture on Textbook	MFD SOPs Lecture
FF2 Tests & Quizzes	MFD SOPs Practical Skills
FF2 Practical Skills	

**OSHA & Safety Topics – 493 hours**

Carbon Monoxide	Propane Emergencies
Care Across Cultures	Scene Safety Considerations
Spinal Injuries	Safety & Risk Management SOP
Getting the Most out of Patient Assessment	Work Injuries
Hell & Back II	High Impact Gypsum Wallboard
PPE & Scene Safety	Alternative Fueled Vehicles
Air Monitoring	APRs
Arrival & Size-Up	Rail Crossing Safety
Refrigerant Emergencies	Hybrid Vehicle Safety
	Heat Exposure



Mayday  
E85  
Flashover  
Structural Collapse  
PPE Cleaning  
Hazmat Size-Up  
Swift Water Rescue  
Fundamentals of Attack Lines  
Cold Weather Operations

Ice Rescue  
Reading Smoke  
Whooping Cough  
Cold Weather Firefighting  
Terrorist vs. Firefighter  
Special Responses for Special Events  
Wildfires  
Understanding & Handling Electrical  
Emergencies

**Fire Operations Manual – 2,537 hours**

Organization of the Fire Department  
Harassment Policy & Investigative  
Procedures  
Station Duty  
Apparatus & Equipment  
Arson & Fire Investigation  
Fire Prevention  
Reports & Records  
Fire Department Communications

Uniforms & Grooming  
General Operations  
Emergency Duty  
Incident Command  
Hazmat & Incident Response  
Basic Practices  
EMS SOPs  
Infection Control Plan  
Job Descriptions

**Urban Search & Rescue – 530 hours**

Confined Space Air Monitoring  
Confined Space  
Breaching & Breaking  
Lifting & Moving  
Cutting & Burning  
Shoring  
Air Bags

Anchoring Systems  
Patient Packaging  
Raising & Lowering  
Search  
Ropes  
Operational Planning

**Water Rescue – 1,495 hours**

Ice Rescue  
MFD Rescue Boat 4  
MFD Rescue Boat 22  
Open Water Rescue

River Rescue  
MFD Air Boat 21  
Emergency Mgmt. Boat School  
MFD Rescue Boat 12

**Defensive Driving – 560 hours**

DCTC Emergency Response Driving  
Academic Course

DCTC Emergency Response Driving

**EMS Continuing Education Classes – 4,636 hours**

OB  
CPR Renewal

Lecture, Pt. Assess/Med & Trauma  
CPR, Inhalation Injury, Stroke SOP

**Conferences & Orientation – 878 hours**

2013 FMO Conference  
2013 Captain Conference

Captain Promotional Orientation  
FMO Promotional Orientation

**Miscellaneous Training – 501 hours**

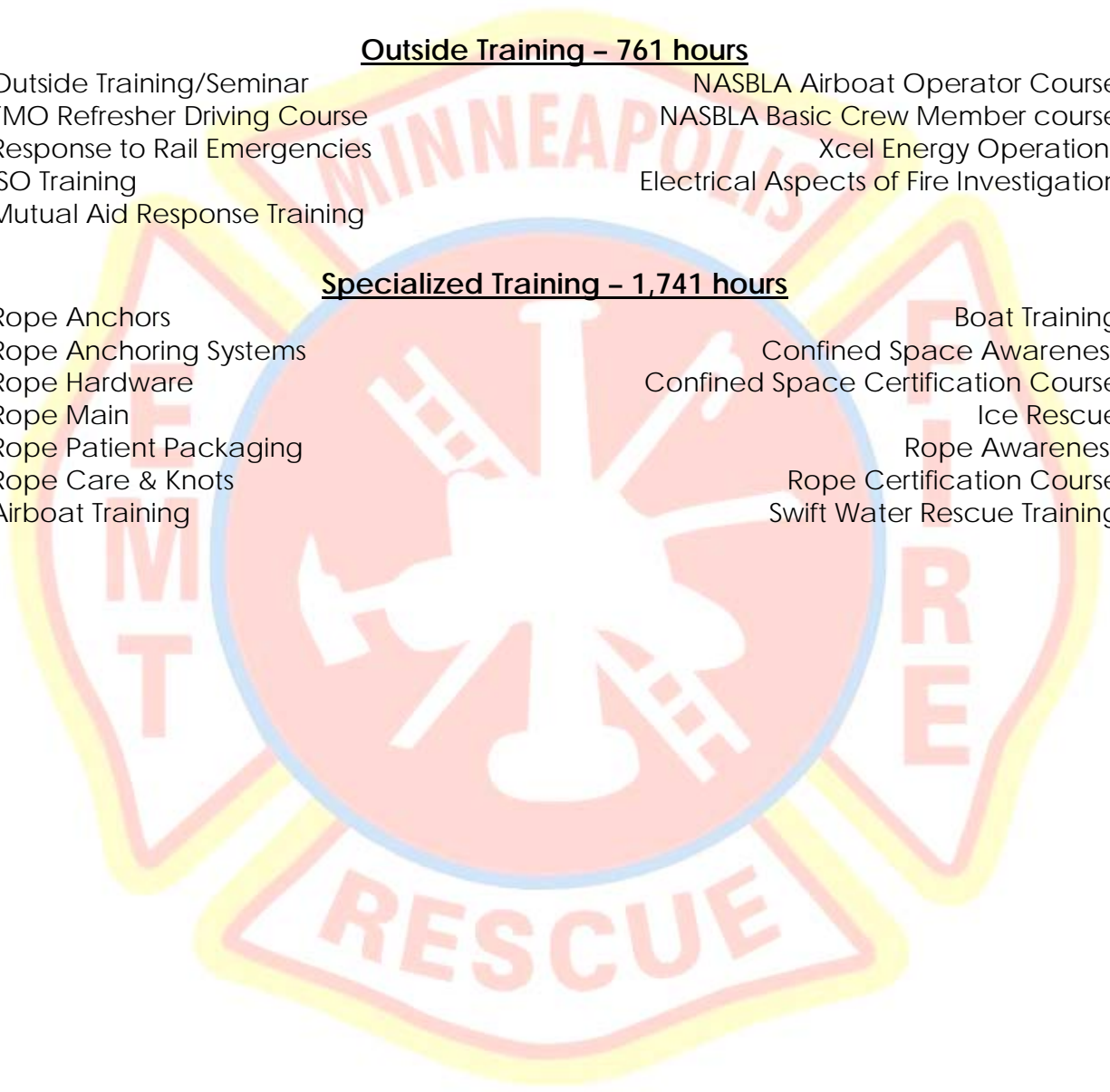
Boarded Vacant Buildings	Truck Functions
Engine Functions	Hazmat Awareness
Firefighter Reintegration	Hazmat Specialty Training
Safety/Workplace	Fire Investigator Scene Safety
Environment/Employee Right to Know	Investigating Motor Vehicle Fires
Fire Officer 1 & 2	Mass Casualty Incident Van Training

**Outside Training – 761 hours**

Outside Training/Seminar	NASBLA Airboat Operator Course
FMO Refresher Driving Course	NASBLA Basic Crew Member course
Response to Rail Emergencies	Xcel Energy Operations
ISO Training	Electrical Aspects of Fire Investigation
Mutual Aid Response Training	

**Specialized Training – 1,741 hours**

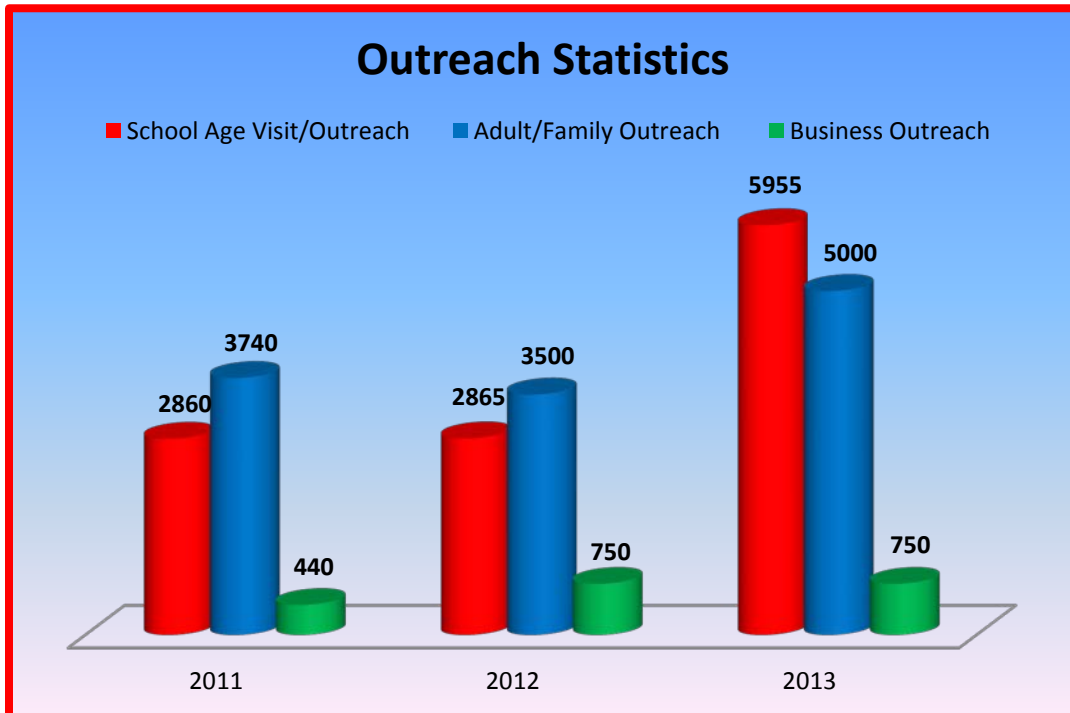
Rope Anchors	Boat Training
Rope Anchoring Systems	Confined Space Awareness
Rope Hardware	Confined Space Certification Course
Rope Main	Ice Rescue
Rope Patient Packaging	Rope Awareness
Rope Care & Knots	Rope Certification Course
Airboat Training	Swift Water Rescue Training



## 2013 Community Outreach

### School Age Visits

Pre-K	1,375
K-2 <sup>nd</sup> Grade	1,100
3-5 <sup>th</sup> Grade	680
6-8 <sup>th</sup> Grade	2,500
9-12 <sup>th</sup> Grade	300



### Youth Firesetter Intervention Program

Referrals from Juvenile Justice Center	0
Referrals from MPD Arson	4
Direct inquiries from parents/caregivers	5

### Newsletters

Monthly newsletters distributed via GovDelivery & other sources  
1,796 subscribers

### Cedar Riverside Fire Ambassador Program

High school age East African residents from Cedar Riverside area  
30 participants/25 graduates

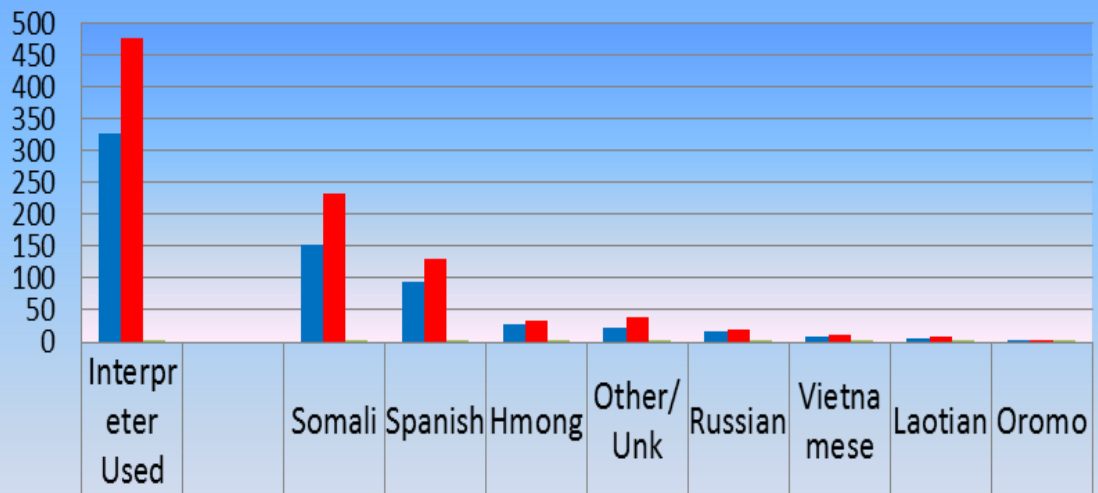
## 2013 Limited English Proficiency Incidents

Total Limited Proficiency Runs	476	
Runs Where Interpreter Used	327	69%

### Interpreter Type Used

Family Member	175	54%
Bystander	109	33%
MFD Employee	41	12%
Language Line	2	1%

## Language Breakdown & Percentage of Time Interpreters Used



■ Interpreter Used	327		153	94	28	22	16	7	5	2
■ Total	476		234	129	34	39	20	10	7	3
■ % Time Used	69%		65%	73%	82%	56%	80%	70%	71%	67%

## 2013 Equipment List

<u>Station</u>	<u>Unit</u>	<u>#</u>	<u>Type</u>	<u>Notes</u>
1	Engine 1	71417	Pumper	2013 Freightliner
1	Duty Deputy	72387	Suburban	2008 Chevrolet Suburban
2	Engine 2	71407	Pumper	2008 Pierce
2	Battalion Chief	72403	Tahoe	2013 Chevrolet Tahoe
2	Boat 2	72711	Boat	1999 Roundabout
2	Boat 2 trailer	72715	Roller Trailer	2011 Shorelander
2	Boat 2 Tow/Plow	11508	Truck	2011 Ford F250
4	Engine 4	71412	Pumper	2012 Freightliner
4	Ladder 4	71330	Ladder	1998 Sutphen Aerial
5	Engine 5	71418	Pumper	2013 Freightliner
5	Salvage	72525		2003 Sterling
6	Engine 6	71422	Pumper	2013 Freightliner
6	Ladder 11	71301	Ladder	2004 Pierce Dash Platform
6	Mobile Command	72524	Pierce	2003 Pierce
6	Battalion Chief	72394	Tahoe	2010 Chevrolet Tahoe
7	Engine 7	71421	Pumper	2013 Freightliner
7	Ladder 3	71011	Ladder	2001 Pierce Dash 2000
7	Battalion Chief	72404	Tahoe	2013 Chevrolet Tahoe
7	Spare Engine 7	71470	Pumper	1998 Freightliner
8	Engine 8	71411	Pumper	2012 Freightliner
8	Rescue 1	72522	Rescue	2000 Pierce Lance
8	Green Gator	72538	Ranger	2004 Polaris
8	Green Gator Trailer	72537	7712G	PJ Trailer
8	Green Gator Tow	72378	Tahoe	2004 Chevrolet Tahoe
11	Engine 11	71415	Pumper	2012 Freightliner
11	Rescue 9	72523	Rescue	2002 Pierce Lance
11	Mobile Lab	72536	Haz Mat	2006 IHC
12	Engine 12	71403	Pumper	2004 General/SP
12	Boat 12	72316	Boat	2012 Stanley
12	Boat 12 Trailer	72717	Galvanized Trailer	2013 Shorelander
12	Boat 12/Airboat Tow	11507	Truck	2011 Ford F250
12	Airboat	72713	Air Ranger	2005 American
12	Airboat Trailer	72714	Trailer	2005 American

<u>Station</u>	<u>Unit</u>	<u>#</u>	<u>Type</u>	<u>Notes</u>
14	Engine 14	71413	Pumper	2012 Freightliner
14	Ladder 10	71012	Ladder	2001 Pierce Dash 2000
14	Battalion Chief	72405	Tahoe	2013 Chevrolet Tahoe
15	Engine 15	71801	Quint	2004 General/SP
15	HCMC		Ambulance	
16	Engine 16	71414	Pumper	2012 Freightliner
16	Blue Dragon	72021		Tioga Air Heater
16	Spare Engine 16	71450	Squirt	1999 Freightliner
16	EAP	72399	Explorer XLT	2008 Ford Explorer
17	Engine 17	71416	Pumper	2012 Freightliner
17	Battalion Chief	72403	Tahoe	2013 Chevrolet Tahoe
17	Spare Engine 27	71404	Pumper	2004 General/SP
19	Engine 19	71409	Pumper	2009 Pierce Arrow XT
19	Decon 24'	72023	Trailer	2003 Wells Cargo trailer
19	Decon 50'	72024	Trailer	2003 Wells Cargo trailer
19	Decon tow vehicle	72546	24' Tractor	1999 IHC
19	Decon tow vehicle	71030	50' Tractor	1990 IHC Pirsch
20	Engine 20	71405	Pumper	2004 General/SP
20	Mass Casualty Incident Bus	72551	Rehab/MCI	1959 Spartan
21	Engine 21	71408	Pumper	2008 Pierce Arrow XT
21	Ladder 2	71802	Ladder	2004 General/SP
21	Spare Ladder 12	71320	Ladder	1996 Sutphen Hale
22	Engine 22	71419	Pumper	2013 Freightliner
22	Fire Investigation	72384	Tahoe	2007 Chevrolet Tahoe
22	Boat 22	72529	1600 Angler	2005 Crestliner
22	Boat 22 Trailer	72531	Bunk Trailer	2006 Shorelander
22	Boat 22 Tow/Plow	72379	Yukon	2005 GMC
27	Engine 27	71406	Pumper	2004 General/SP
27	Ladder 5	71803	Ladder	2004 General/SP
27	Spare Quint 2	71804	Quint	2004 General/SP
27	HCMC		Ambulance	
28	Engine 28	71402	Pumper	2004 General/SP
28	Spare Engine 28	71401	Pumper	2004 General/SP
EOTF	Spare Engine 20	71460	Pumper	1998 Freightliner
EOTF	Spare Quint 20	71805	Quint	2004 General/SP

