

BEARDEN PLACE: Housing Competition Minneapolis, MN

small + CLEAN & BIG + dirty

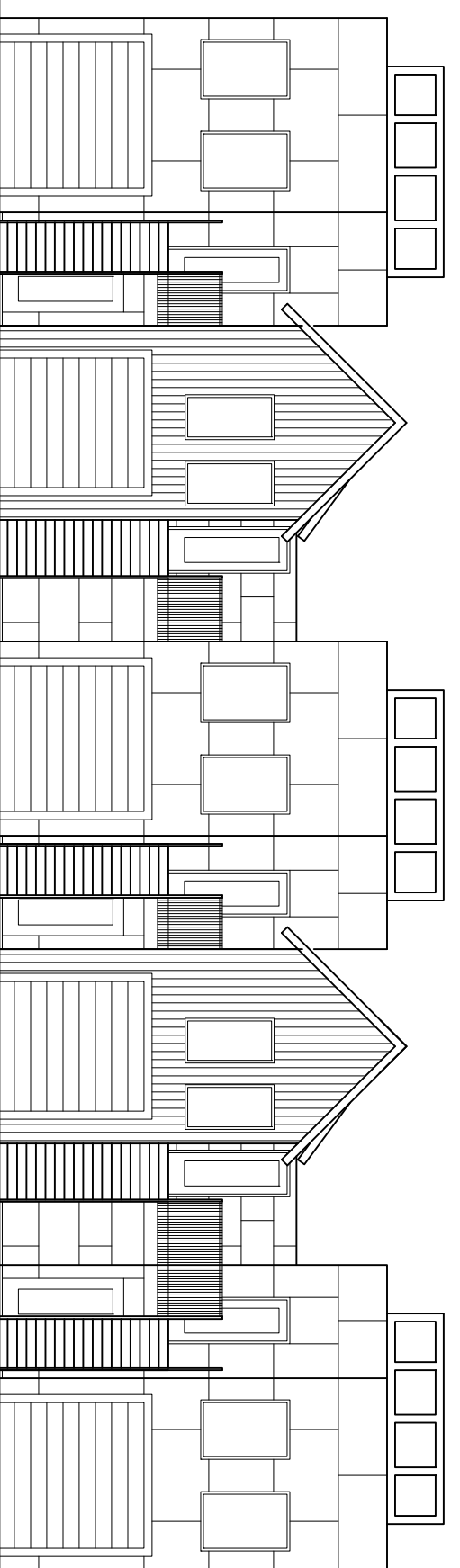
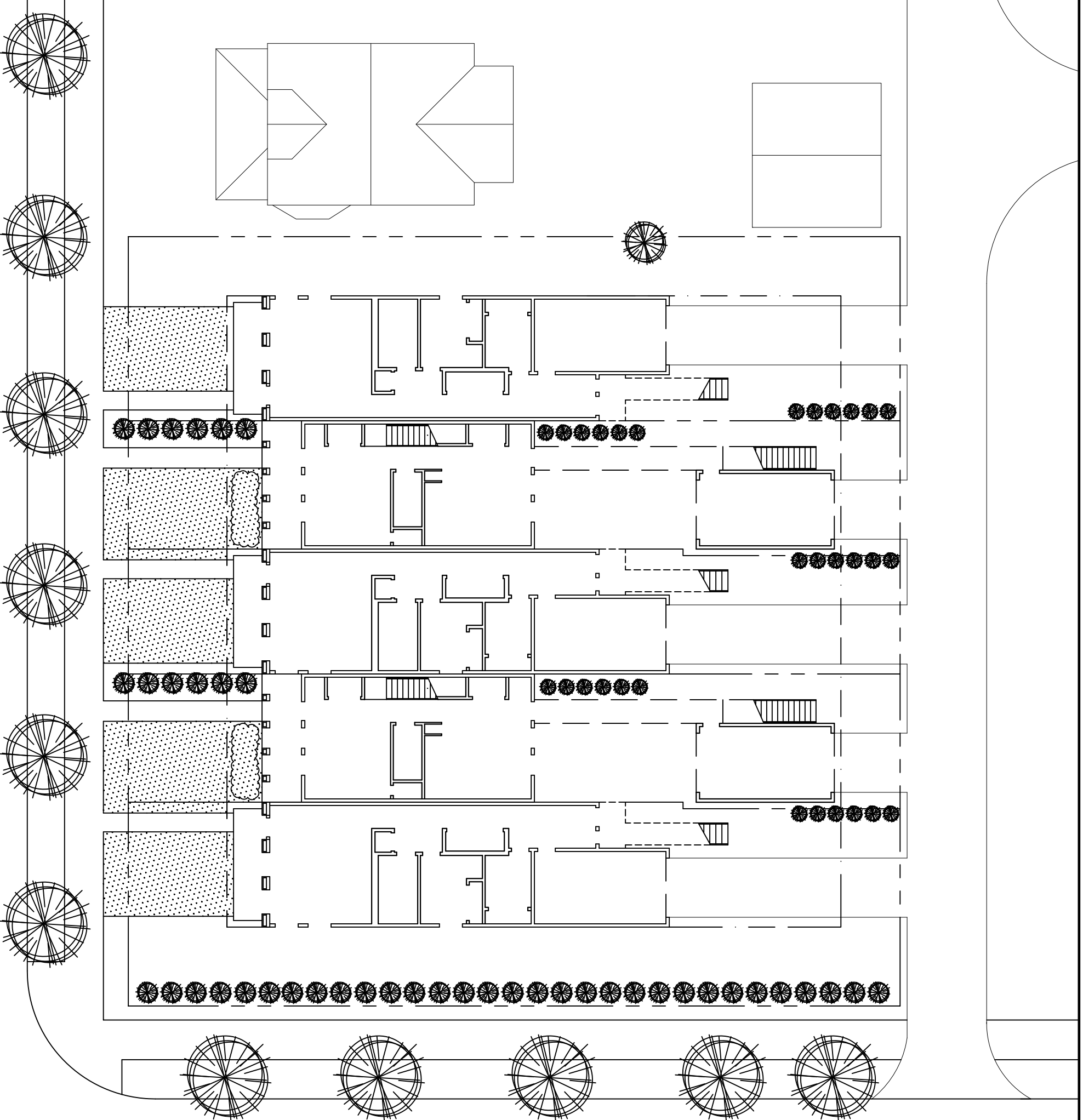
The concept behind small + CLEAN / BIG + dirty comes from discussions with a few local working artists. Depending on what type of art the artists are creating, the spaces they desire are different. Certain artists such as woodworkers, metalworkers, painters, and sculptors require BIG open spaces for their work that can be dusty, smelly, loud and messy. While other artists such as writers, architects, designers, and graphic artists desire smaller more organized spaces.

small + CLEAN

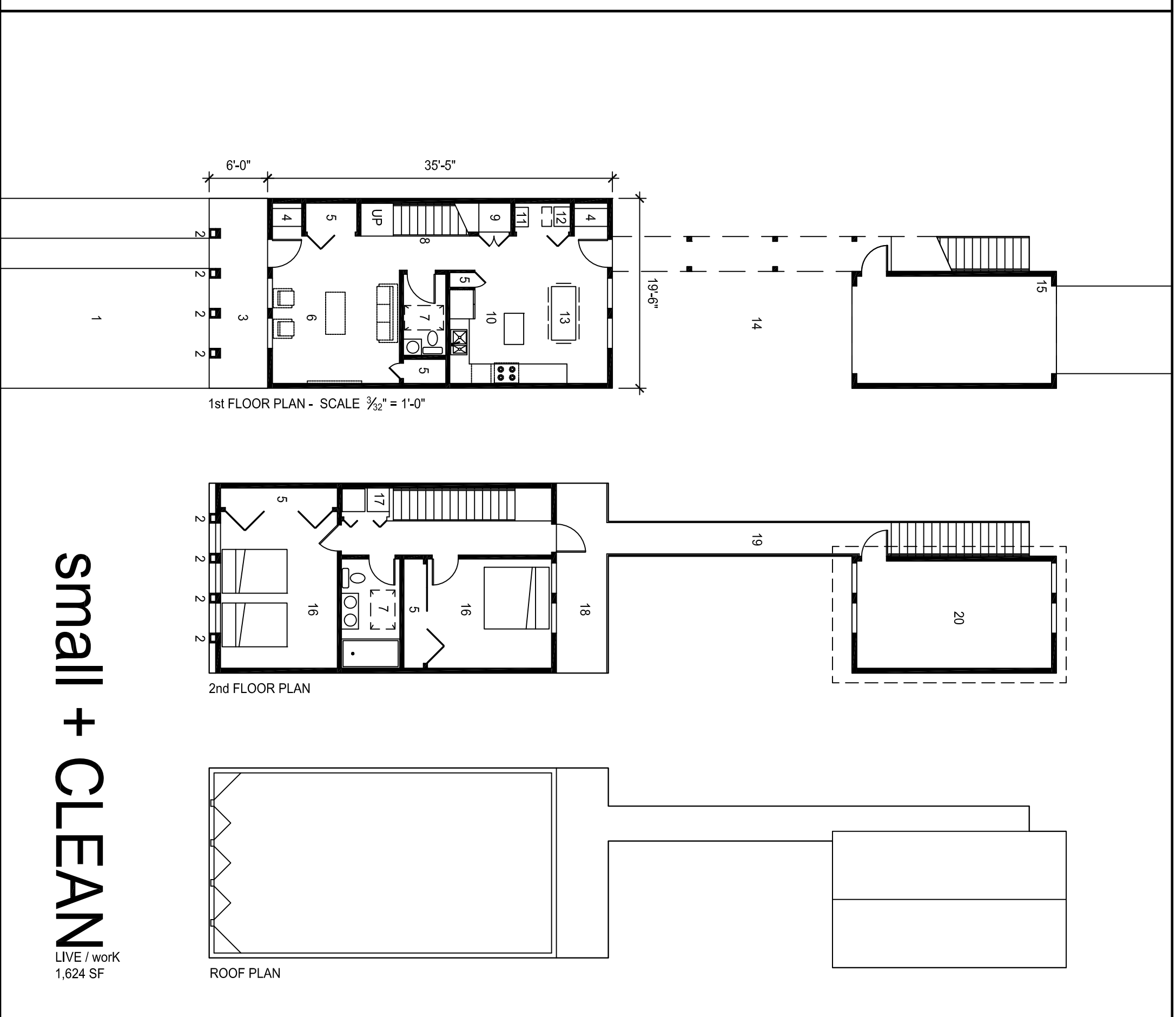
- 240 S.F. work space
- Live and work are separated
- Exterior bridge connecting spaces
- Exterior stair for accessibility to clients
- 11 ft. ceilings
- Garage detached from living space
- 2 Bedrooms above living/kitchen/dining

BIG + dirty

- 1,000 S.F. work space
- Live and work are separated
- Exterior stair connecting spaces
- 11 ft. ceilings
- Trap door in garage for transfer of large materials
- North light monitors
- Water supply to work space



SOUTH ELEVATION $\frac{3}{32}'' = 1'-0''$



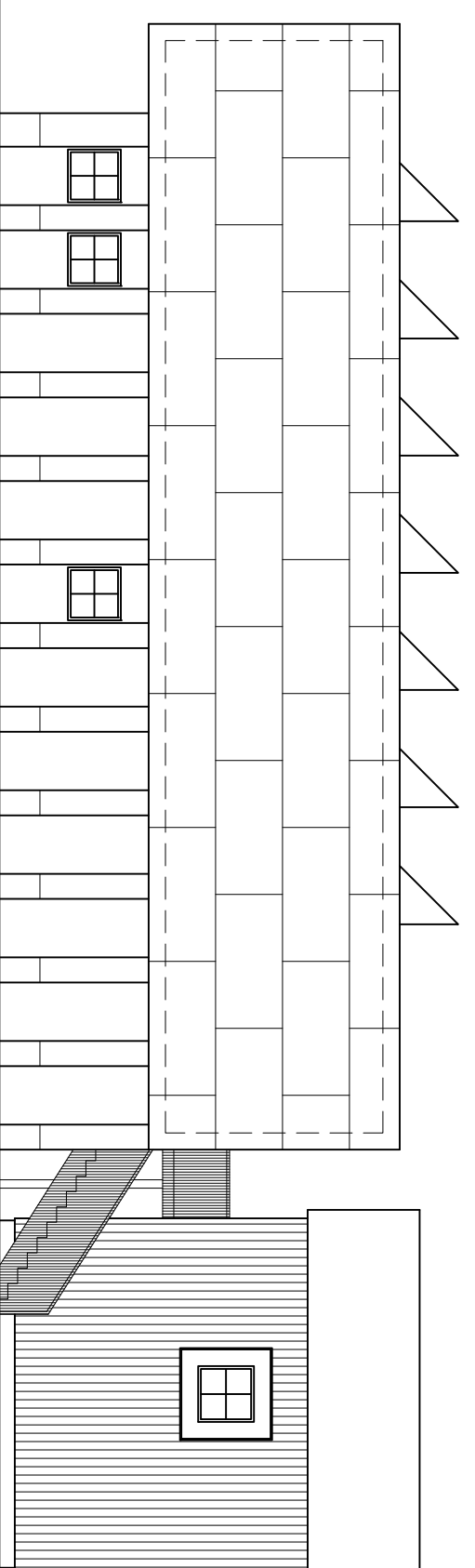
1st FLOOR PLAN - SCALE $\frac{3}{32}'' = 1'-0''$

2nd FLOOR PLAN

ROOF PLAN

small + CLEAN

LIVE / work
1,624 SF



EAST ELEVATION $\frac{3}{32}'' = 1'-0''$

KEY

- | | |
|-----------------------------------|---|
| 1 - RAIN GARDENS | 12 - IN-FLOOR HEATING PUMP |
| 2 - RAIN COLUMN COLLECTORS | 13 - DINING ROOM |
| 3 - FRONT PORCH | 14 - BACK YARD |
| 4 - ENTRY BENCH | 15 - GARAGE |
| 5 - CLOSET | 16 - BED ROOM |
| 6 - LIVING ROOM | 17 - WASHER / DRYER |
| 7 - BATHROOM | 18 - ROOF DECK |
| 8 - SOLID PLYWOOD FOR FUTURE LIFT | 19 - STUDIO BRIDGE |
| 9 - PANTRY | 20 - STUDIO |
| 10 - KITCHEN | 21 - FLOOR DOORS FOR VERTICAL CIRCULATION |
| 11 - H2O ON DEMAND | 22 - FUTURE SOLAR PANELS |

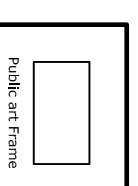
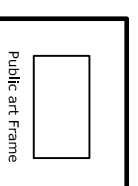
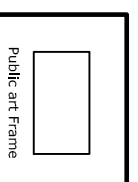
BEARDEN PLACE: Housing Competition Minneapolis, MN

small + CLEAN:

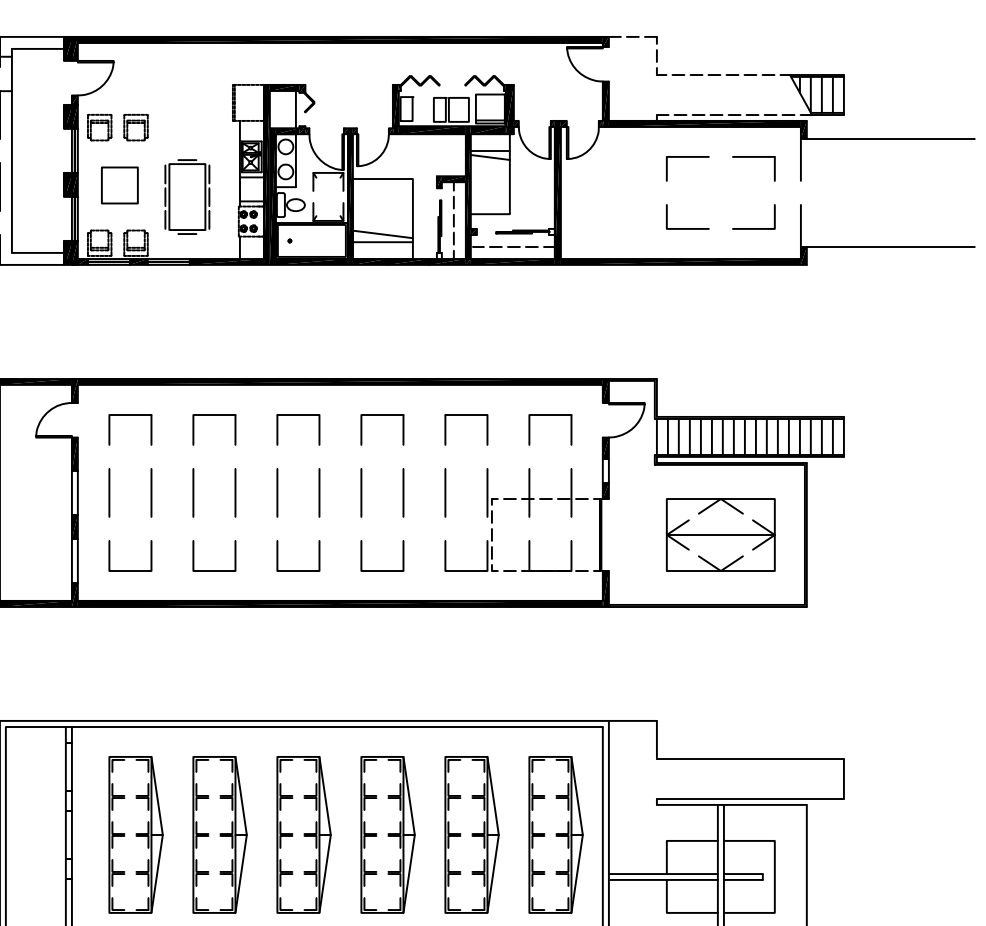
This unit type is designed with writers and designers in mind. A two-story live/work unit includes a traditional main floor/living area/kitchen/dining with 2 bedrooms above. The studio space is located above the garage and can be accessed from the second floor via bridge or from an exterior stair that the artist can allow client visits without entering the living space. The artist work space in this unit is about 240 S.F. and is located in the back of the units. The facade at the back is gabled and relates to the look of the surrounding neighborhood.

BIG + dirty:

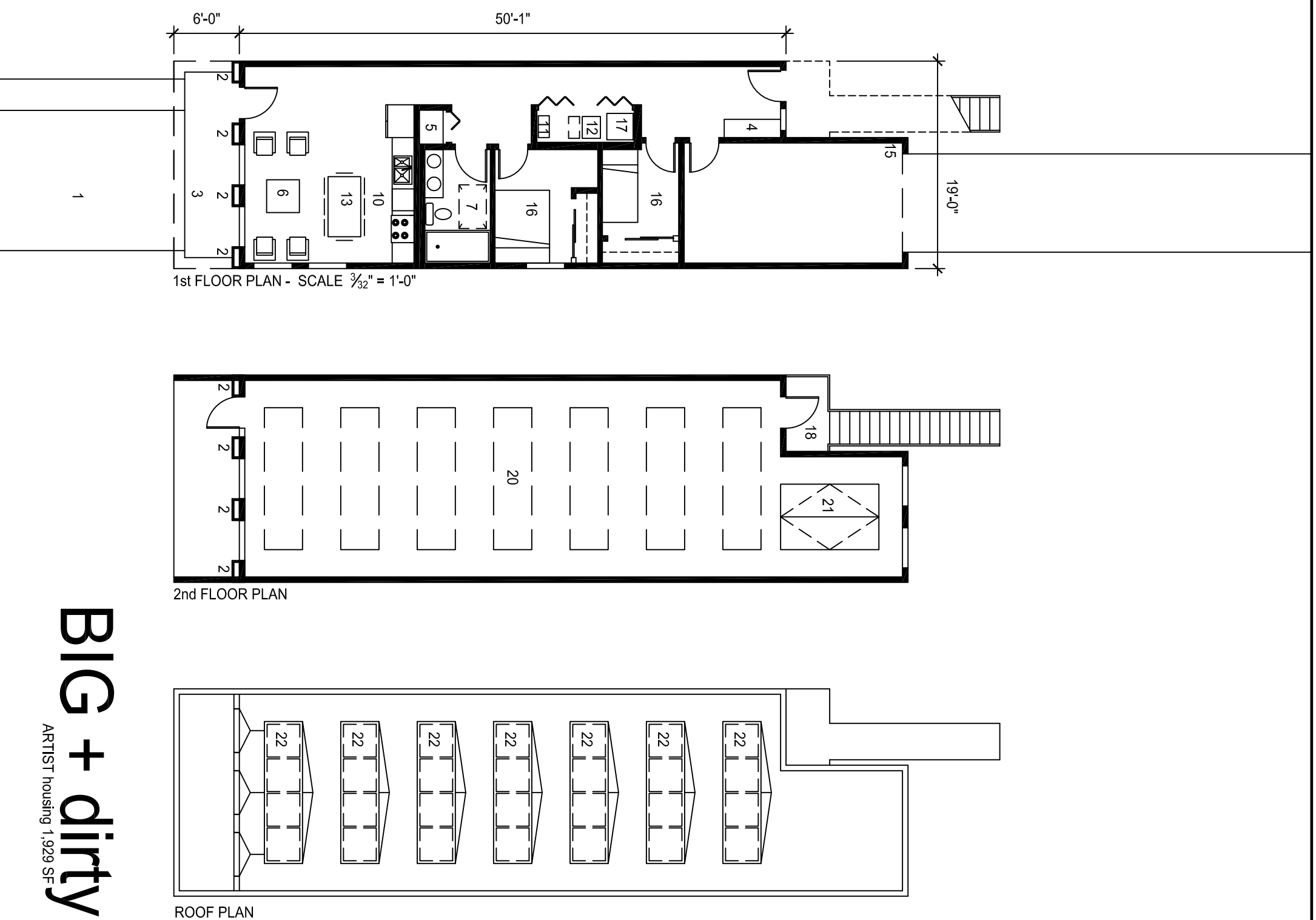
This unit type provides large open artist studio space for flexible use, completely separated from the 2 bedroom living area below. The work space above is accessed by an exterior stair, allowing the woodworkers, metalworkers, painters, and sculptors to remove dust, odors, and sounds from the more private living space. The facade along the street will relate less to the look of the surrounding neighborhood, but relate more to the cultural/artistic side of the community.



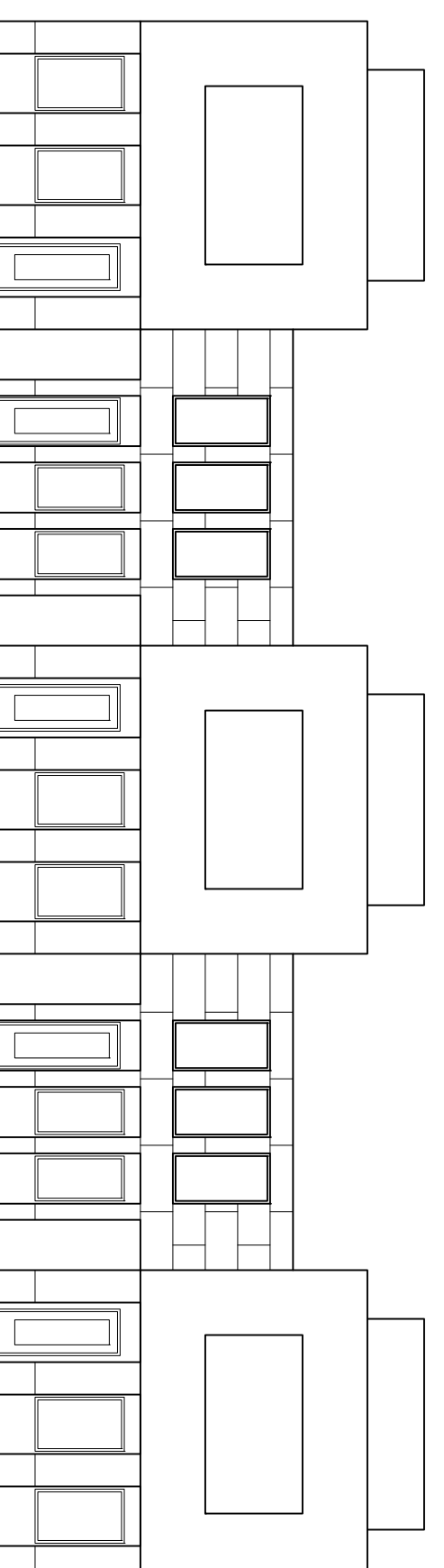
The large overhanging studio box is open with windows on both ends. The front facade windows are framed with public art, creating a facade that allows the interior messy/creative spaces to become framed art works to the street.



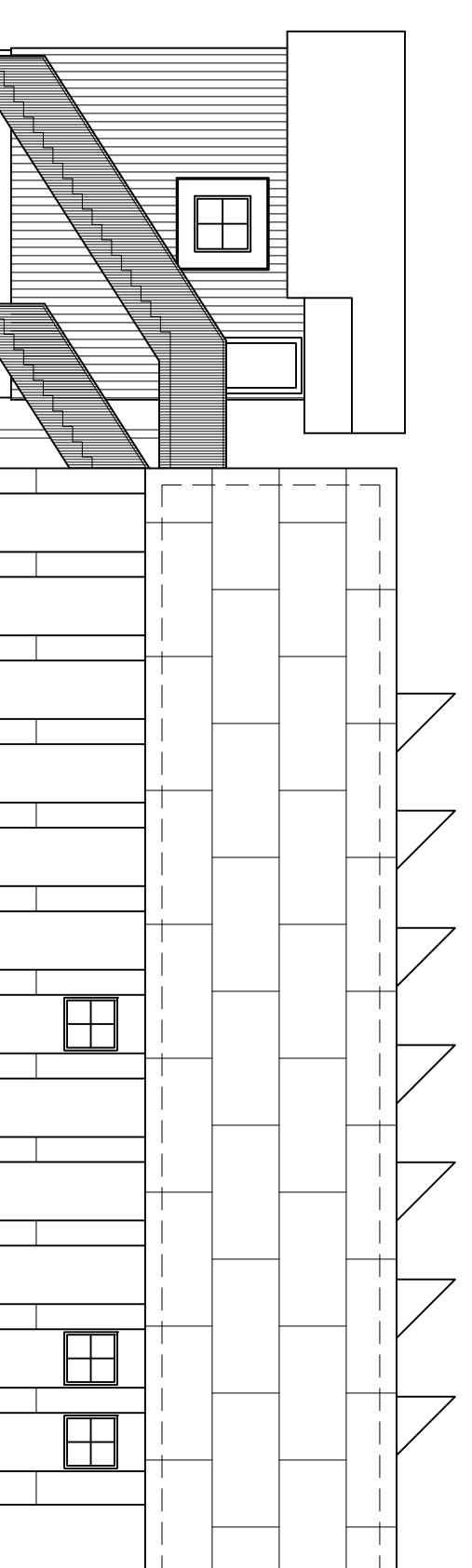
BIG + dirty
ARTIST housing 1,600 SF



BIG + dirty
ARTIST housing 1,929 SF



NORTH ELEVATION $\frac{3}{32}'' = 1'-0''$



WEST ELEVATION $\frac{3}{32}'' = 1'-0''$